



KLHL25 Mouse Monoclonal Antibody

E10-30065

Background: KLHL25 (ectoderm-neural cortex protein 2, ENC2) is a cytoplasmic protein that contains six Kelch regions and a single BTB (POZ) domain. KLHL25 is highly homologous to another Kelch-like protein, ENC1, and it is believed to operate in a manner similar to other Kelch-domain containing proteins. Kelch-domain repeat containing proteins often act as modifiers of Actin fibers. Expressed early in embryogenesis, ENC1 helps to mediate neuronal process formation. It also appears to have a role in neural crest cell differentiation. KLHL25 likely functions as a substrate specific adapter for protein ubiquitinating complexes. KLHL25 is expressed in most tissues with highest expression in brain and liver.

Catalog Number: E10-30065

Amount: 100µg/100µl

Clone Number: 1B7

Species: Mouse IgG2b

MW: 65kDa

Aliases: ENC2; ENC-2; FLJ12587; FLJ45015; KLHL25

Entrez Gene: 64410

Immunogen: Purified recombinant fragment of human KLHL25 expressed in E. Coli.

Storage: Store at 4 °C, for long-term storage at -20 °C

Formulation: Ascitic fluid containing 0.03% sodium azide.

Species Reactivities: Human

Tested Applications: WB, ELISA. Not yet tested in other applications. Determining optimal working dilutions by titration test.

Application notes: WB 1/500 - 1/2000. ELISA..ELISA. Propose dilution 1/10000.

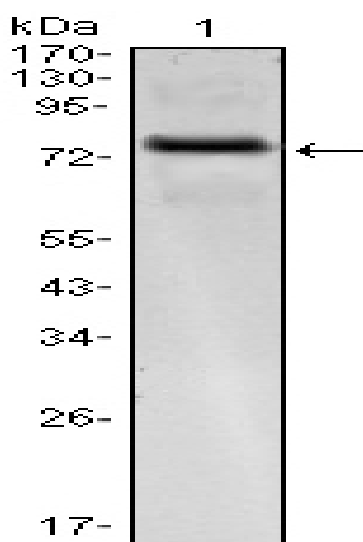


Figure 1. Western blot analysis using KLHL25 mAb against KLHL25-hlgFc transfected HEK293 cell.

For Research Use Only