



ZBTB16 Mouse Monoclonal Antibody

E10-30076

Background: This gene is a member of the Krueppel C2H2-type zinc-finger protein family and encodes a zinc finger transcription factor that contains nine Kruppel-type zinc finger domains at the carboxyl terminus. This protein is located in the nucleus, is involved in cell cycle progression, and interacts with a histone deacetylase. Specific instances of aberrant gene rearrangement at this locus have been associated with acute promyelocytic leukemia (APL). Alternate transcriptional splice variants have been characterized. Tissue specificity: Within the hematopoietic system, PLZF is expressed in bone marrow, early myeloid cell lines and peripheral blood mononuclear cells. Also expressed in the ovary, and at lower levels, in the kidney and lung.

Catalog Number: E10-30076

Amount: 100µg/100µl

Clone Number: 5B3

Species: Mouse IgG1

MW: 74kDa

Aliases: PLZF; ZNF145; ZBTB16

Entrez Gene: 7704

Immunogen: Purified recombinant fragment of human ZBTB16 expressed in E. Coli.

Storage: Store at 4°C, for long term storage, store at -20°C.

Formulation: Ascitic fluid containing 0.03% sodium azide.

Species Reactivities: Human

Tested Applications: WB, IF, ELISA. Not yet tested in other applications.

Application notes: WB: 1/500 - 1/2000, IF: 1/200 - 1/1000, ELISA: Propose dilution 1/10000.

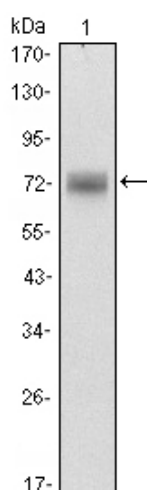


Figure 1: Western blot analysis using ZBTB16 mouse mAb against Hela (1) cell lysate.

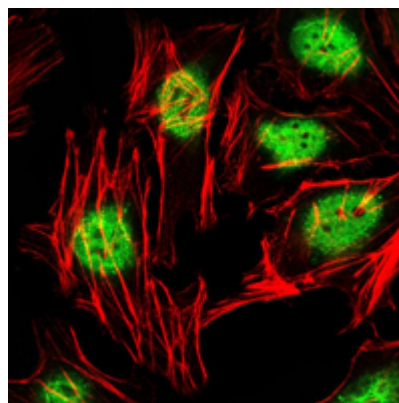


Figure 2: Immunofluorescence analysis of Hela cells using ZBTB16 mouse mAb (green). Red: Actin filaments have been labeled with Alexa Fluor-555 phalloidin.

For Research Use Only