



ERBB2 Mouse Monoclonal Antibody

E10-30112

Background: ERBB2: v-erb-b2 erythroblastic leukemia viral oncogene homolog 2, neuro/glioblastoma derived oncogene homolog (avian). This gene encodes a member of the epidermal growth factor (EGF) receptor family of receptor tyrosine kinases. This protein has no ligand binding domain of its own and therefore cannot bind growth factors. However, it does bind tightly to other ligand-bound EGF receptor family members to form a heterodimer, stabilizing ligand binding and enhancing kinase-mediated activation of downstream signalling pathways, such as those involving mitogen-activated protein kinase and phosphatidylinositol-3 kinase.

Catalog Number: E10-30112

Amount: 100µg/100µl

Clone Number: 6C2

Species: Mouse IgG1

MW: 180kDa

Aliases: NEU; HER2; TKR1; CD340; HER-2

Entrez Gene: 2064

Immunogen: Purified recombinant fragment of human ERBB2(aa750-987) expressed in E. Coli.

Storage: Store at 4°C, for long term storage, store at -20°C.

Formulation: Ascitic fluid containing 0.03% sodium azide.

Species Reactivities: Human

Tested Applications: WB, IHC, FC, ELISA. Not yet tested in other applications.

Application notes: WB: 1/500 - 1/2000, IHC: 1/200-1/1000, FC: 1/200-1/400, ELISA: Propose dilution 1/10000.

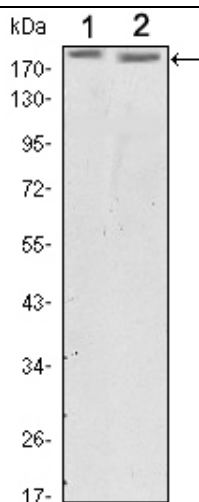


Figure 1: Western blot analysis using ERBB2 mouse mAb against SKBR3 (1) and MCF-7 (2) cell lysate.

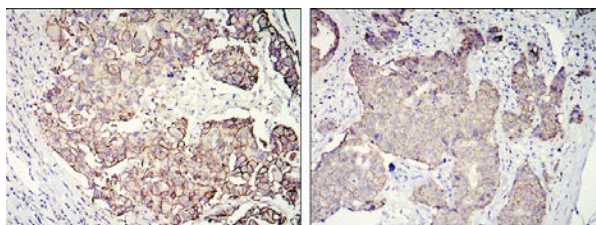


Figure 2: Immunohistochemical analysis of paraffin-embedded galactophore tumour using ERBB2 mouse mAb with DAB staining

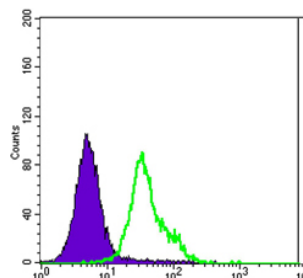


Figure 3: Flow cytometric analysis of MCF-7 cells using ERBB2 mouse mAb (green) and negative control (purple).

For Research Use Only