



## STK11 Mouse Monoclonal Antibody

E10-30139

**Background:** Essential role in G1 cell cycle arrest. Phosphorylates and activates members of the AMPK-related subfamily of protein kinases. Tumor suppressor. serine/threonine kinase 11, with two alternatively spliced isoforms, expressed in all tissues, strongly homolog of *Xenopus* early embryonic kinase 1 (XEEK1), tumor suppressor gene in hamartomas syndrome and in left sided colon carcinogenesis, mutated in sporadic testicular cancer, malignant melanomas and laryngeal tumors, playing a minor role in the development of ovarian carcinoma. LKB1 is a potential target for atherosclerosis and cancer and is shown to be mutated in patients with Peutz-Jeghers cancer syndrome. Tissue specificity: Ubiquitously expressed. Strongest expression in testis and fetal liver.

**Catalog Number:** E10-30139

**Amount:** 100µg/100µl

**Clone Number:** 4H12

**Species:** Mouse IgG1

**MW:** 54kDa

**Aliases:** PJS; LKB1; STK11

**Entrez Gene:** 6794

**Immunogen:** Purified recombinant fragment of human STK11 expressed in *E. Coli*.

**Storage:** Store at 4°C, for long term storage, store at -20°C.

**Formulation:** Ascitic fluid containing 0.03% sodium azide.

**Species Reactivities:** Human; Mouse; Monkey

**Tested Applications:** WB, FC, ELISA. Not yet tested in other applications.

**Application notes:** WB: 1/500 - 1/2000, FC: 1/200-1/400, ELISA: Propose dilution 1/10000.

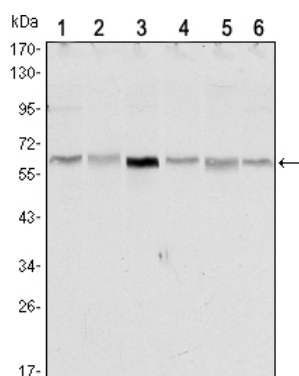


Figure 1: Western blot analysis using STK11 mouse mAb against NIH/3T3 (1), Raw246.7 (2), COS7 (3), Jurkat (4), HEK293 (5) and A431 (6) cell lysate.

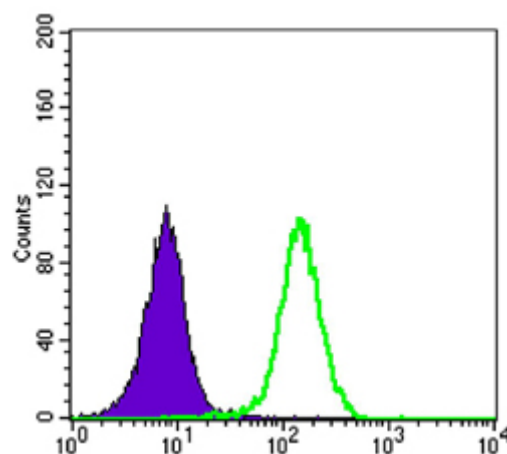


Figure 2: Flow cytometric analysis of K562 cells using STK11 mouse mAb (green) and negative control (purple).

**For Research Use Only**