



GCG Mouse Monoclonal Antibody

E10-30151

Background: The protein encoded by this gene is actually a preproprotein that is cleaved into four distinct mature peptides. One of these, glucagon, is a pancreatic hormone that counteracts the glucose-lowering action of insulin by stimulating glycogenolysis and gluconeogenesis. Glucagon is a ligand for a specific G-protein linked receptor whose signalling pathway controls cell proliferation. Two of the other peptides are secreted from gut endocrine cells and promote nutrient absorption through distinct mechanisms. Finally, the fourth peptide is similar to glicentin, an active enteroglucagon. Tissue specificity: Glucagon is secreted in the A cells of the islets of Langerhans. GLP-1, GLP-2, oxyntomodulin and glicentin are secreted from enteroendocrine cells throughout the gastrointestinal tract. GLP1 and GLP2 are also secreted in selected neurons in the brain.

Catalog Number: E10-30151

Amount: 100µg/100µl

Clone Number: 2F9

Species: Mouse IgG1

MW: 21kDa

Aliases: GLP1; GLP2; GRPP; GCG

Entrez Gene: 2641

Immunogen: Purified recombinant fragment of human GCG expressed in E. Coli.

Storage: Store at 4°C for long term storage, store at -20°C for short term storage.

Formulation: Ascitic fluid containing 0.03% sodium azide.

Species Reactivities: Human

Tested Applications: WB, ELISA. Not yet tested in other applications.

Application notes: WB: 1/500 - 1/2000, ELISA: Propose dilution 1/10000.

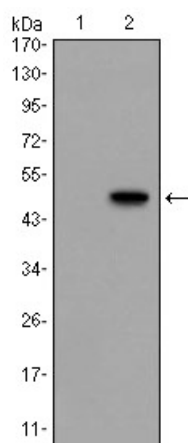


Figure 1: Western blot analysis using GCG mAb against HEK293 (1) and GCG-hlgGfc transfected HEK293 (2) cell lysate.

For Research Use Only