



CEA Mouse Monoclonal Antibody

E10-30156

Background: Carcino Embryonic Antigen (CEA) is synthesised during development in the fetal gut, and is re-expressed in increased amounts in intestinal carcinomas and several other tumors. Antibodies to CEA are useful in identifying the origin of various metastatic adenocarcinomas and in distinguishing pulmonary adenocarcinomas (60 to 70% are CEA+) from pleural mesotheliomas (rarely or weakly CEA+). The carcinoembryonic antigen (CEA) is a member of a large family of glycoproteins and a useful tumor marker for adenocarcinoma. Tissue specificity: Found in adenocarcinomas of endodermally derived digestive system epithelium and fetal colon.

Catalog Number: E10-30156
Amount: 100µg/100µl
Clone Number: 3G12
Species: Mouse IgG1
MW: 77kDa
Aliases: CEA; CD66e; DKFZp781M2392; CEACAM5
Entrez Gene: 1048
Immunogen: Purified recombinant fragment of human CEA expressed in E. Coli.
Storage: Store at 4°C, for long term storage, store at -20°C.
Formulation: Ascitic fluid containing 0.03% sodium azide.
Species Reactivities: Human
Tested Applications: WB, IHC, ELISA. Not yet tested in other applications.
Application notes: WB: 1/500 - 1/2000, IHC: 1/200-1/1000, ELISA: Propose dilution 1/10000.

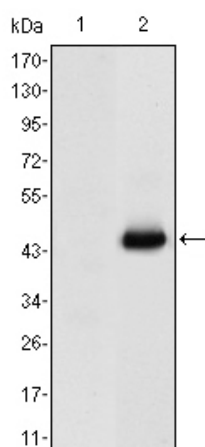


Figure 1: Western blot analysis using CEA mAb against HEK293 (1) and CEA-hlgGfC transfected HEK293 (2) cell lysate.

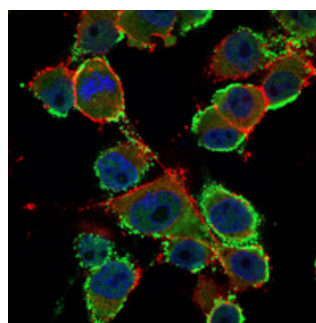
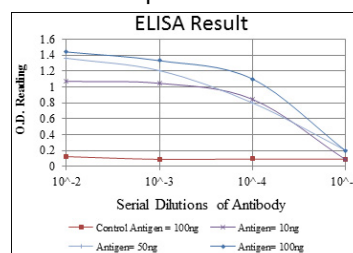


Figure 2: Immunofluorescence analysis of PANC-1 cells using CEA mouse mAb (green). Blue: DRAQ5 fluorescent DNA dye. Red: Actin filaments have been labeled with Alexa Fluor-555 phalloidin.



For Research Use Only