



GYS1 Mouse Monoclonal Antibody

E10-30159

Background: Glycogen synthase, skeletal muscle, the rate limiting enzyme of the insulin-induced glycogenesis. The protein encoded by this gene catalyzes the addition of glucose monomers to the growing glycogen molecule through the formation of alpha-1, 4-glycoside linkages. Mutations in this gene are associated with muscle glycogen storage disease. Muscle GS is expressed in several tissues.

Catalog Number: E10-30159

Amount: 100µg/100µl

Clone Number: 3A7

Species: Mouse IgG1

MW: 85kDa

Aliases: GSY; GYS; GYS1

Entrez Gene: 2997

Immunogen: Purified recombinant fragment of human GYS1 expressed in E. Coli.

Storage: Store at 4°C, for long term storage, store at -20°C.

Formulation: Ascitic fluid containing 0.03% sodium azide.

Species Reactivities: Human

Tested Applications: WB, FC, ELISA. Not yet tested in other applications.

Application notes: WB: 1/500 - 1/2000, FC: 1/200-1/400, ELISA: Propose dilution 1/10000.

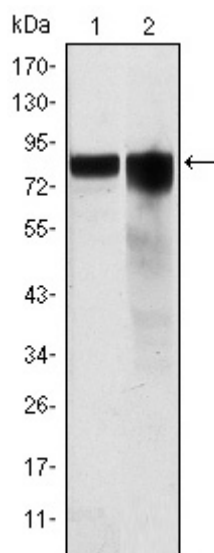


Figure 1: Western blot analysis using GYS1 mouse mAb against HeLa (1) and HEK293 (2) cell lysate.

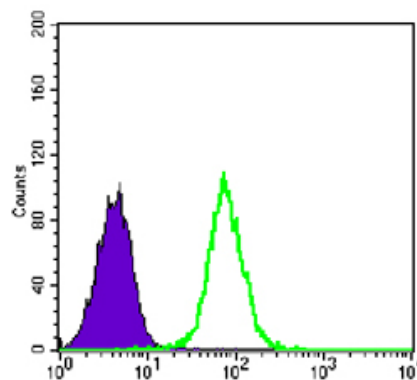
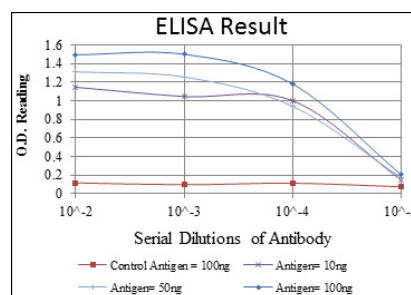


Figure 2: Flow cytometric analysis of K562 cells using GYS1 mouse mAb (green) and negative control (purple).



For Research Use Only