



ATF2 Mouse Monoclonal Antibody

E10-30164

Background: This gene encodes a transcription factor that is a member of the leucine zipper family of DNA binding proteins. This protein binds to the cAMP-responsive element (CRE), an octameric palindrome. The protein forms a homodimer or heterodimer with c-Jun and stimulates CRE-dependent transcription. The protein is also a histone acetyltransferase (HAT) that specifically acetylates histones H2B and H4 in vitro; thus it may represent a class of sequence-specific factors that activate transcription by direct effects on chromatin components. Additional transcript variants have been identified but their biological validity has not been determined. Tissue specificity: Abundant expression seen in the brain.

Catalog Number: E10-30164

Amount: 100µg/100µl

Clone Number: 4F12

Species: Mouse IgG1

MW: 55kDa

Aliases: HB16; CREB2; TREB7; CRE-BP1; MGC111558; ATF2

Entrez Gene: 1386

Immunogen: Purified recombinant fragment of human ATF2 expressed in E. Coli.

Storage: Store at 4°C, for long term storage, store at -20°C.

Formulation: Ascitic fluid containing 0.03% sodium azide.

Species Reactivities: Human; Mouse

Tested Applications: WB, IHC, ELISA. Not yet tested in other applications.

Application notes: WB: 1/500 - 1/2000, IHC: 1/200-1/1000, ELISA: Propose dilution 1/10000.

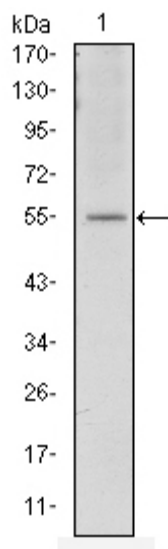


Figure 1: Western blot analysis using ATF2 mouse mAb against NIH/3T3 cell lysate.

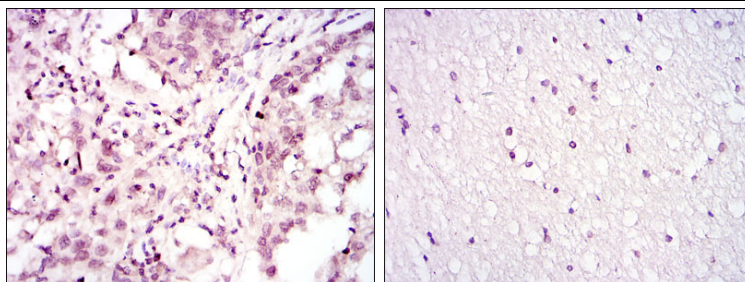
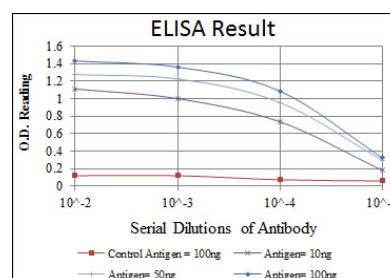


Figure 2: Immunohistochemical analysis of paraffin-embedded lung cancer (left) and brain tissues (right) using ATF2 mouse mAb with DAB staining.



For Research Use Only