



MAP2K4 Mouse Monoclonal Antibody

E10-30168

Background: This gene encodes a dual specificity protein kinase that belongs to the Ser/Thr protein kinase family. This kinase is a direct activator of MAP kinases in response to various environmental stresses or mitogenic stimuli. It has been shown to activate MAPK8/JNK1, MAPK9/JNK2, and MAPK14/p38, but not MAPK1/ERK2 or MAPK3/ERK3. This kinase is phosphorylated, and thus activated by MAP3K1/MEKK. The knockout studies in mice suggested the roles of this kinase in mediating survival signal in T cell development, as well as in the organogenesis of liver. Tissue specificity: Abundant expression is seen in the skeletal muscle. It is also widely expressed in other tissues.

Catalog Number: E10-30168

Amount: 100µg/100µl

Clone Number: 5H4

Species: Mouse IgG1

MW: 42kDa

Aliases: JNKK; MEK4; MKK4; SEK1; JNKK1; SERK1; MAPKK4; PRKMK4; MAP2K4

Entrez Gene: 6416

Immunogen: Purified recombinant fragment of human MAP2K4 expressed in E. Coli.

Storage: Store at 4°C, for long term storage, store at -20°C.

Formulation: Ascitic fluid containing 0.03% sodium azide.

Species Reactivities: Human

Tested Applications: WB, IHC, FC, ELISA. Not yet tested in other applications.

Application notes: WB: 1/500 - 1/2000, IHC: 1/200-1/1000, FC: 1/200-1/400, ELISA: Propose dilution 1/10000.

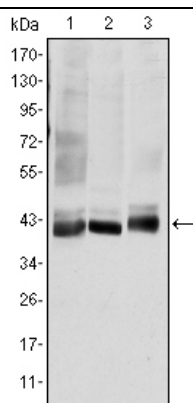


Figure 1: Western blot analysis using MAP2K4 mouse mAb against HepG2 (1), K562 (2), and HEK293 (3) cell lysate.

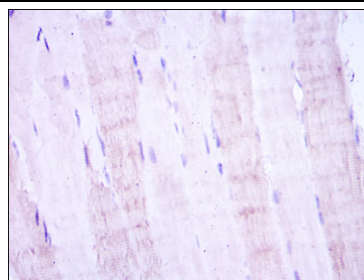
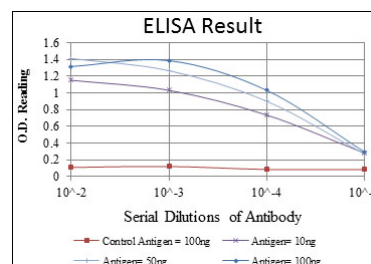


Figure 2: Immunohistochemical analysis of paraffin-embedded muscle tissues using MAP2K4 mouse mAb with DAB staining.



For Research Use Only