



MSI1 Mouse Monoclonal Antibody

E10-30177

Background: This gene encodes a protein containing two conserved tandem RNA recognition motifs. Similar proteins in other species function as RNA-binding proteins and play central roles in posttranscriptional gene regulation. Expression of this gene has been correlated with the grade of the malignancy and proliferative activity in gliomas and melanomas. Musashi-1 is frequently used as a marker for proliferating neural precursor cells, it is also expressed in epithelial stem cells including intestinal and mammary gland stem cells. Tissue specificity: Detected in fetal kidney, brain, liver and lung, and in adult brain and pancreas. Detected in hepatoma cell lines.

Catalog Number: E10-30177

Amount: 100µg/100µl

Clone Number: 2A12

Species: Mouse IgG1

MW: 39kDa

Aliases: MSI1

Entrez Gene: 4440

Immunogen: Purified recombinant fragment of human MSI1 expressed in E. Coli.

Storage: Store at 4°C, for long term storage, store at -20°C.

Formulation: Ascitic fluid containing 0.03% sodium azide.

Species Reactivities: Human

Tested Applications: WB, FC, ELISA. Not yet tested in other applications.

Application notes: WB: 1/500 - 1/2000, FC: 1/200-1/400, ELISA: Propose dilution 1/10000.

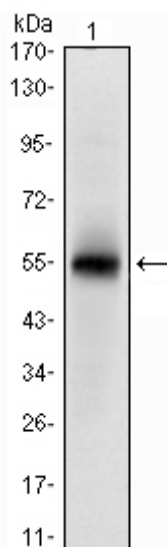


Figure 1: Western blot analysis using MSI1 mAb against recombinant protein.

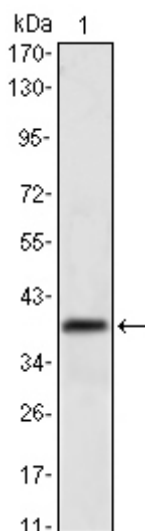
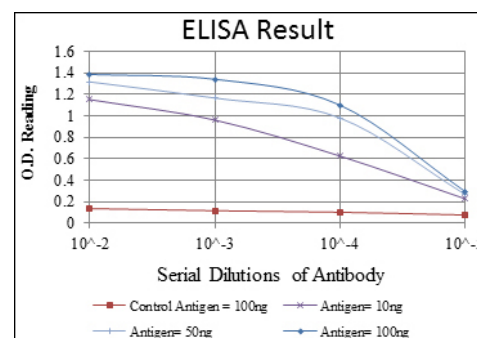


Figure 2: Western blot analysis using MSI1 mouse mAb against NTERA-2 cell lysate.



For Research Use Only