



SHP60 Mouse Monoclonal Antibody

E10-30193

Background: This gene encodes a member of the chaperonin family. The encoded mitochondrial protein may function as a signaling molecule in the innate immune system. This protein is essential for the folding and assembly of newly imported proteins in the mitochondria. This gene is adjacent to a related family member and the region between the 2 genes functions as a bidirectional promoter. Several pseudogenes have been associated with this gene. Two transcript variants encoding the same protein have been identified for this gene. Mutations associated with this gene cause autosomal recessive spastic paraplegia 13. (provided by RefSeq)

Catalog Number: E10-30193

Amount: 100µg/100µl

Clone Number: 3G8

Species: Mouse IgG1

MW: 61kDa

Aliases: HLD4; CPN60; GROEL; HSP60; HSP65; SPG13; HSP-60; HuCHA60; HSPD1

Entrez Gene: 3329

Immunogen: Purified recombinant fragment of human HSP60 expressed in E. Coli.

Storage: Store at 4°C, for long term storage, store at -20°C.

Formulation: Ascitic fluid containing 0.03% sodium azide.

Species Reactivities: Human; Rat; Mouse; Monkey

Tested Applications: WB, IHC, IF, FC, ELISA. Not yet tested in other applications.

Application notes: WB: 1/500 - 1/2000, IHC: 1/200-1/1000, IF: 1/200-1/1000, FC: 1/200-1/400, ELISA: Propose dilution 1/10000.

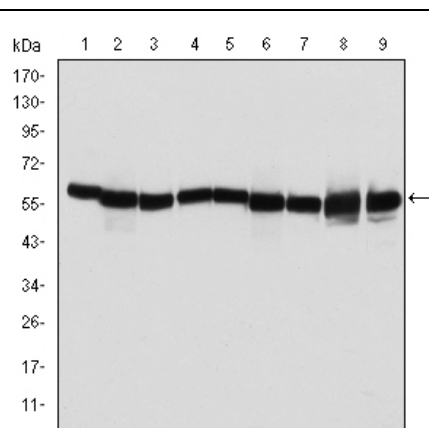


Figure 1: Western blot analysis using HSP60 mouse mAb against T47D (1), Hela (2), HepG2 (3), A549 (4), Jurkat (5), HEK293 (6), NIH/3T3 (7), PC-12 (8) and Cos7 (9) cell lysate.

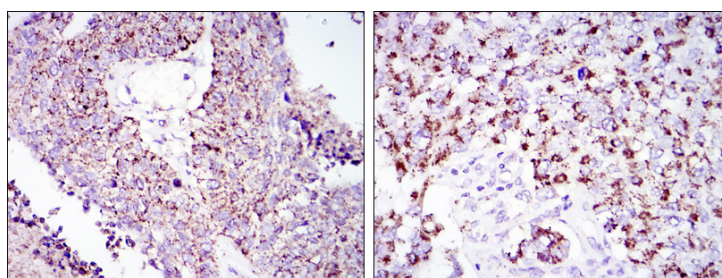
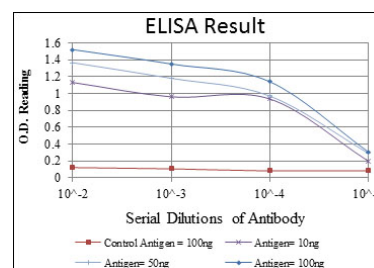


Figure 2: Immunohistochemical analysis of paraffin-embedded lung cancer tissues (left) and kidney cancer tissues (right) using HSP60 mouse mAb with DAB staining.



For Research Use Only