



## CREB1 Mouse Monoclonal Antibody

E10-30200

**Background:** This gene encodes a transcription factor that is a member of the leucine zipper family of DNA binding proteins. This protein binds as a homodimer to the cAMP-responsive element, an octameric palindrome. The protein is phosphorylated by several protein kinases, and induces transcription of genes in response to hormonal stimulation of the cAMP pathway. Alternate splicing of this gene results in two transcript variants encoding different isoforms. (provided by RefSeq)

**Catalog Number:** E10-30200

**Amount:** 100µg/100µl

**Clone Number:** 5G3

**Species:** Mouse IgG1

**MW:** 43kDa

**Aliases:** CREB; MGC9284; CREB1

**Entrez Gene:** 1385

**Immunogen:** Purified recombinant fragment of human CREB1 expressed in E. Coli.

**Storage:** Store at 4°C, for long term storage, store at -20°C.

**Formulation:** Ascitic fluid containing 0.03% sodium azide.

**Species Reactivities:** Human; Mouse; Rat; Monkey

**Tested Applications:** WB, IHC, IF, ELISA. Not yet tested in other applications.

**Application notes:** WB: 1/500 - 1/2000, IHC: 1/200-1/1000, IF: 1/200-1/1000, ELISA: Propose dilution 1/10000.

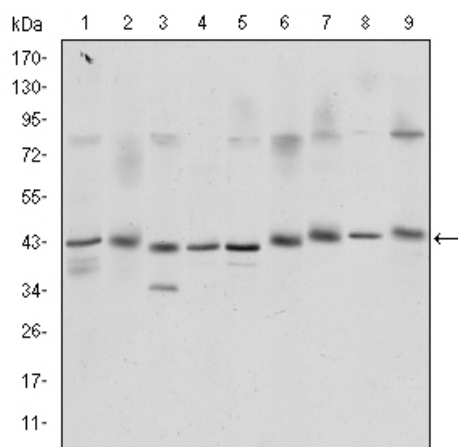


Figure 1: Western blot analysis using CREB1 mouse mAb against K562 (1), Jurkat (2), L1210 (3), HEK293 (4), A431 (5), Hela (6), Cos7 (7), PC-12 (8), and NIH/3T3 (9) cell lysate.

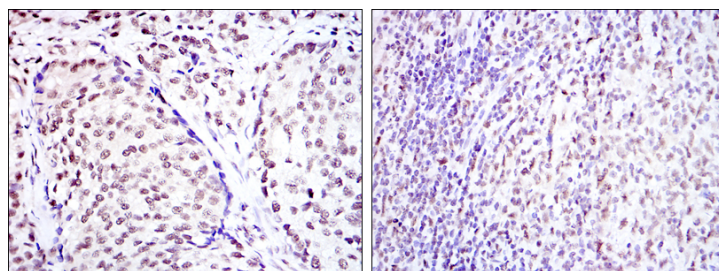
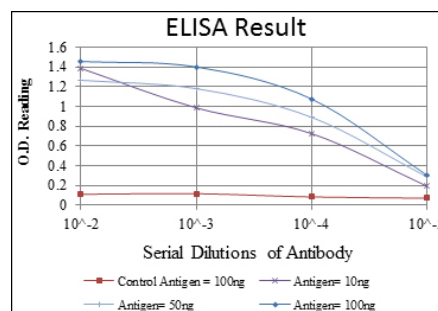


Figure 2: Immunohistochemical analysis of paraffin-embedded prostate cancer tissues (left) and submaxillary tumor tissues (right) using CREB1 mouse mAb with DAB staining.



**For Research Use Only**