



Epha10 Mouse Monoclonal Antibody

E10-30208

- Background:** Ephrin receptors, the largest subfamily of receptor tyrosine kinases (RTKs), and their ephrin ligands are important mediators of cell-cell communication regulating cell attachment, shape, and mobility in neuronal and epithelial cells (Aasheim et al., 2005 (PubMed 15777695)). Tissue specificity: Mainly expressed in testis.
- Catalog Number:** E10-30208
- Amount:** 100 μ g/100 μ l
- Clone Number:** 2E8
- Species:** Mouse IgG1
- MW:** 110kDa
- Aliases:** FLJ16103; FLJ33655; MGC43817
- Entrez Gene:** 284656
- Immunogen:** Purified recombinant fragment of human Epha10 expressed in E. Coli.
- Storage:** Store at 4°C, for long term storage, store at -20°C.
- Formulation:** Ascitic fluid containing 0.03% sodium azide.
- Species Reactivities:** Human
- Tested Applications:** WB, ELISA. Not yet tested in other applications.
- Application notes:** WB: 1/500 - 1/2000, ELISA: Propose dilution 1/10000.

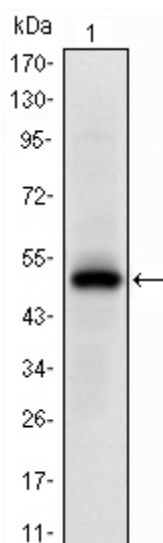
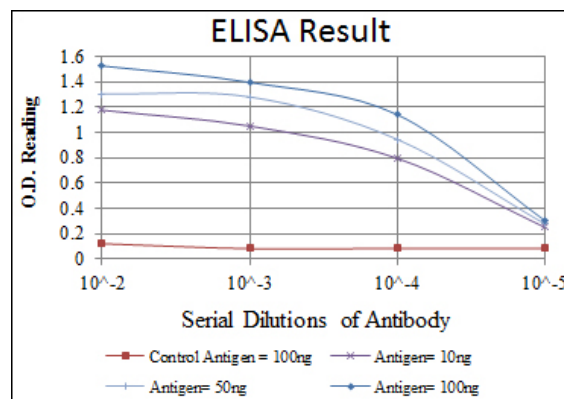


Figure 1: Western blot analysis using Epha10 mAb against human Epha10 (AA: 34-295) recombinant protein. (Expected MW is 109.7 kDa)



For Research Use Only