



SMN1 Mouse Monoclonal Antibody

E10-30222

Background: This gene is part of a 500 kb inverted duplication on chromosome 5q13. This duplicated region contains at least four genes and repetitive elements which make it prone to rearrangements and deletions. The repetitiveness and complexity of the sequence have also caused difficulty in determining the organization of this genomic region. The telomeric and centromeric copies of this gene are nearly identical and encode the same protein.

Catalog Number: E10-30222

Amount: 100µg/100µl

Clone Number: 5H1

Species: Mouse IgG1

MW: 39kDa

Aliases: SMA; SMN; SMA1; SMA2; SMA3; SMA4; SMA@; SMN2; SMNT; BCD541; T-BCD541

Entrez Gene: 6606

Immunogen: Purified recombinant fragment of human SMN1 expressed in E. Coli.

Storage: Store at 4°C, for long term storage, store at -20°C.

Formulation: Ascitic fluid containing 0.03% sodium azide.

Species Reactivities: Human; Monkey

Tested Applications: WB, IHC, IF, ELISA. Not yet tested in other applications.

Application notes: WB: 1/500 - 1/2000, IHC: 1/200 - 1/1000, IF: 1/200 - 1/1000,
ELISA: Propose dilution 1/10000.

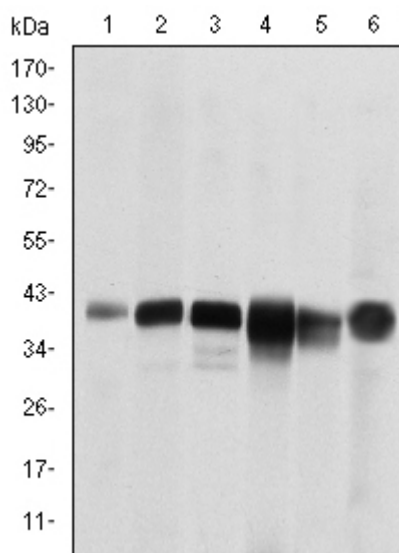


Figure 1: Western blot analysis using SMN1 mouse mAb against RAJI (1), Cos7 (2), Jurkat (3), K562 (4), Hela (5) and HepG2 (6) cell lysate.

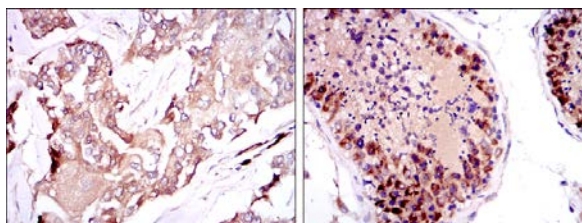
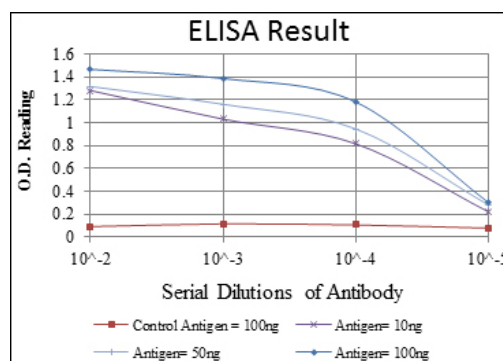


Figure 2: Immunohistochemical analysis of paraffin-embedded breast cancer tissues (left) and testis tissues (right) using SMN1 mouse mAb with DAB staining.



For Research Use Only