



ACTA2 Mouse Monoclonal Antibody

E10-30235

Background: The protein encoded by this gene belongs to the actin family of proteins, which are highly conserved proteins that play a role in cell motility, structure and integrity. Alpha, beta and gamma actin isoforms have been identified, with alpha actins being a major constituent of the contractile apparatus, while beta and gamma actins are involved in the regulation of cell motility. This actin is an alpha actin that is found in skeletal muscle. Defects in this gene cause aortic aneurysm familial thoracic type 6. Multiple alternatively spliced variants, encoding the same protein, have been identified.

- Catalog Number:** E10-30235
Amount: 100µg/100µl
Clone Number: 4A4
Species: Mouse IgG1
MW: 42kDa
Aliases: AAT6; ACTSA; α-Smooth Muscle Actin
Entrez Gene: 59
Immunogen: Synthesized peptide of human ACTA2.
Storage: Store at 4°C, for long term storage, store at -20°C.
Formulation: Ascitic fluid containing 0.03% sodium azide.
Species Reactivities: Human; Mouse; Rat; Monkey
Tested Applications: WB, IHC, IF, FC, ELISA. Not yet tested in other applications.
Application notes: WB: 1/500 - 1/2000, IHC: 1/200 - 1/1000, IF: 1/200 - 1/1000, FC:1/200 - 1/400, ELISA: Propose dilution 1/10000.

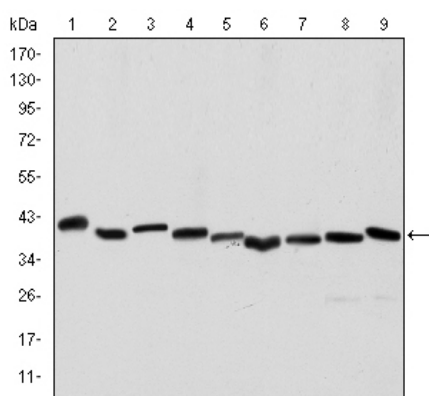


Figure 1: Western blot analysis using ACTA2 mouse mAb against Hela (1), A431 (2), Jurkat (3), K562 (4), HEK293 (5), HepG2 (6), NIH/3T3 (7), PC-12 (8) and Cos7 (9) cell lysate.

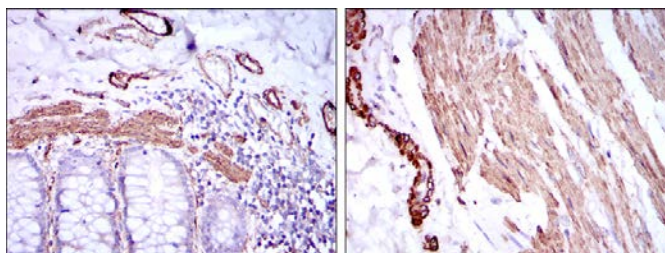
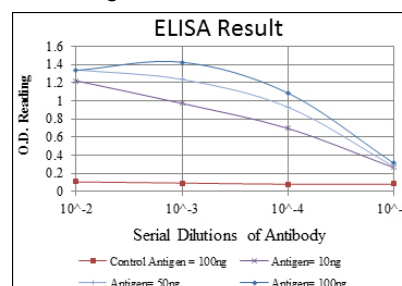


Figure 2: Immunohistochemical analysis of paraffin-embedded human duodenum tissues (left) and human esophagus tissues (right) using ACTA2 mouse mAb with DAB staining.



For Research Use Only