



MMP1 Mouse Monoclonal Antibody

E10-30236

Background: Proteins of the matrix metalloproteinase (MMP) family are involved in the breakdown of extracellular matrix in normal physiological processes, such as embryonic development, reproduction, and tissue remodeling, as well as in disease processes, such as arthritis and metastasis. Most MMP's are secreted as inactive proproteins which are activated when cleaved by extracellular proteinases. This gene encodes a secreted enzyme which breaks down the interstitial collagens, types I, II, and III. The gene is part of a cluster of MMP genes which localize to chromosome 11q22.3. Alternative splicing results in multiple transcript variants.

Catalog Number: E10-30236

Amount: 100µg/100µl

Clone Number: 6A5

Species: Mouse IgG1

MW: 54kDa

Aliases: CLG; CLGN

Entrez Gene: 4312

Immunogen: Purified recombinant fragment of human MMP1 expressed in E. Coli.

Storage: Store at 4°C, for long term storage, store at -20°C.

Formulation: Ascitic fluid containing 0.03% sodium azide.

Species Reactivities: Human

Tested Applications: WB, IHC, IF, FC, ELISA. Not yet tested in other applications.

Application notes: WB: 1/500 - 1/2000, IHC: 1/200 - 1/1000, IF: 1/200 - 1/1000, FC: 1/200 - 1/400, ELISA: Propose dilution 1/10000.

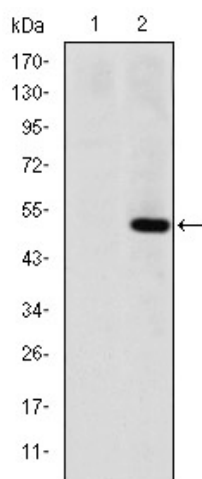


Figure 1: Western blot analysis using MMP1 mAb against HEK293 (1) and MMP1-hlgGfC transfected HEK293 (2) cell lysate.

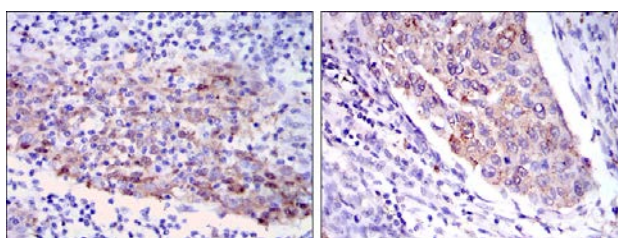
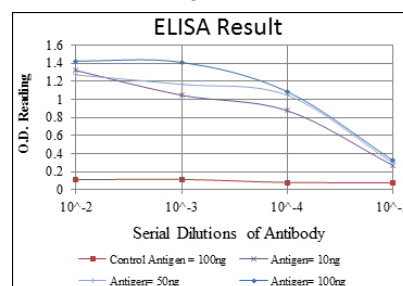


Figure 2: Immunohistochemical analysis of paraffin-embedded human cervical cancer tissues (left) and human kidney cancer tissues (right) using MMP1 mouse mAb with DAB staining.



For Research Use Only