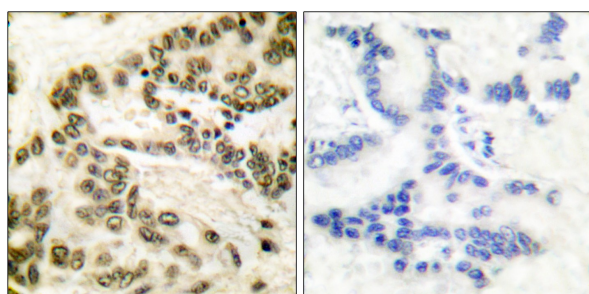




CREB (Ab-142) Antibody

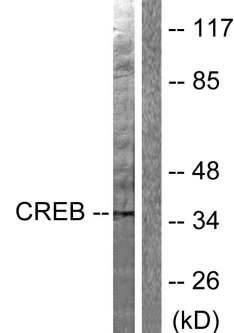
E11-0006B

Catalog Number:	E11-0006B
Amount:	100µg/100µl
Swiss-Prot No. :	P16220
All Names:	CREB-1, CREB1, cAMP-response element binding protein
Form of Antibody:	Rabbit IgG in phosphate buffered saline (without Mg ²⁺ and Ca ²⁺), pH 7.4, 150mM NaCl, 0.02% sodium azide and 50% glycerol.
Storage/Stability:	Store at -20°C/1 year
Immunogen:	The antiserum was produced against synthesized non-phosphopeptide derived from human CREB around the phosphorylation site of serine 142 (D-L-S ^P -S-D).
Purification:	The antibody was affinity-purified from rabbit antiserum by affinity-chromatography using epitope-specific immunogen.
Specificity/Sensitivity	CREB (Ab-142) antibody detects endogenous levels of total CREB protein.
Reactivity:	Human, Mouse, Rat
Applications:	WB: 1:500~1000 IHC: 1:50~100 IF: 1:100~1:500 ELISA: 1:40000
References:	Anjali Rajadhyaksha, J. Neurosci., Aug 1999; 19: 6348. Brian F. Clem, Endocrinology, Mar 2005; 146: 1348 - 1356. Boyoung Lee, J. Neurosci., Feb 2005; 25: 1137 - 1148. Lance Zirpel, J. Neurosci., Aug 2000; 20: 6267.



Peptide - +

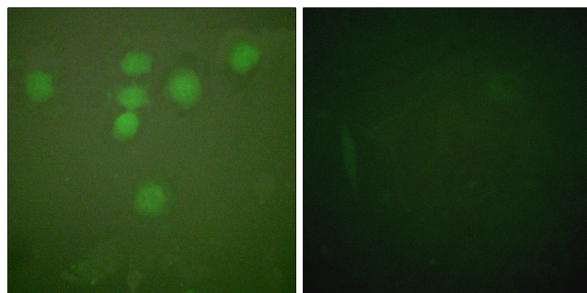
Immunohistochemical analysis of paraffin-embedded human lung carcinoma tissue using CREB (Ab-142) antibody (#B0006).



PMA + +
Peptide - +

Western blot analysis of extracts from HeLa cells treated with PMA (125ng/ml, 30min), using CREB (Ab-142) antibody (#B0006, Line 1 and 2).

For Research Use Only



PMA + -

Immunofluorescence analysis of HeLa cells, treated with PMA (125ng/ml, 30mins), using CREB (Ab-142) antibody (#B0006).