

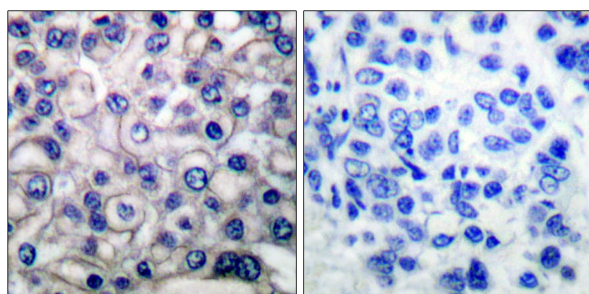


EGFR (Ab-693) Antibody

E11-0009B

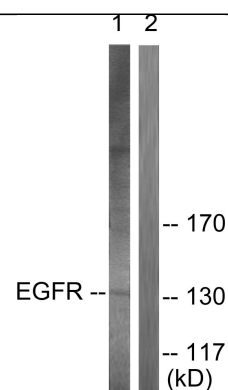
- Catalog Number:** E11-0009B
- Amount:** 100µg/100µl
- Swiss-Prot No. :** P00533
- All Names:** EC 2.7.10.1, ERBB1, Epidermal growth factor receptor precursor, Receptor protein-tyrosine kinase ErbB-1, kinase EGFR
- Form of Antibody:** Rabbit IgG in phosphate buffered saline (without Mg²⁺ and Ca²⁺), pH 7.4, 150mM NaCl, 0.02% sodium azide and 50% glycerol.
- Storage/Stability:** Store at -20°C/1 year
- Immunogen:** The antiserum was produced against synthesized non-phosphopeptide derived from human EGFR around the phosphorylation site of threonine 693 (P-L-T^P-P-S).
- Purification:** The antibody was affinity-purified from rabbit antiserum by affinity-chromatography using epitope-specific immunogen.
- Specificity/Sensitivity** EGFR (Ab-693) antibody detects endogenous levels of total EGFR protein.
- Reactivity:** Human, Mouse, Rat
- Applications:** WB: 1:300~1:1000 IHC: 1:50~1:100
IF: 1:100~1:500 ELISA: 1:40000
- References:** Roland Reinehr, FASEB J, Feb 2003; 10: 1096.
Natsumi Yamamoto, J. Cell Sci., Nov 2006; 119: 4623 - 4633.
James G. Christensen Clin, Cancer Res., Dec 2001; 7: 4230.
Hideki Katayama, AACR Meeting Abstracts, Mar 2004; 2004: 1074.
Ali Tadlaoui Hbib, AACR Meeting Abstracts, Apr 2006; 2006: 1177
Komal Raina, AACR Meeting Abstracts, Apr 2006; 2006: 752 - 753.
Thomas Dittmar, FASEB J, Sep 2002; 10.1096.

For Research Use Only



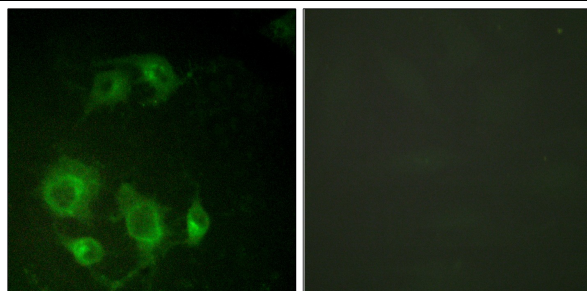
Peptide - +

Immunohistochemical analysis of paraffin-embedded human breast carcinoma tissue using EGFR (Ab-693) antibody (#B0009).



Peptide - +

Western blot analysis of extracts from A431 cells, using EGFR (Ab-693) antibody (#B0009, Line 1 and 2).



Peptide - +

Immunofluorescence analysis of HuvEc cells, using using EGFR (Ab-693) antibody (#B0009).