



## GSK3α/β (Ab-279/216) Antibody

E11-0012B

**Catalog Number:** E11-0012B

**Amount:** 100μg/100μl

**Swiss-Prot No. :** P49840

**All Names:** EC 2.7.11.26, Factor A, GSK-3 alpha, GSK3-alpha, Glycogen synthase kinase-3 alpha, kinase GSK3-alpha, GSK-3 beta, GSK3B, Glycogen synthase kinase-3 beta, Protein kinase GSK-3-beta, kinase GSK3-beta

**Form of Antibody:** Rabbit IgG in phosphate buffered saline (without Mg<sup>2+</sup> and Ca<sup>2+</sup>), pH 7.4, 150mM NaCl, 0.02% sodium azide and 50% glycerol.

**Storage/Stability:** Store at -20°C/1 year

**Immunogen:** The antiserum was produced against synthesized non-phosphopeptide derived from human GSK3α/β around the phosphorylation site of tyrosine 279/216 (V-S-Y-I-C).

**Purification:** The antibody was affinity-purified from rabbit antiserum by affinity-chromatography using epitope-specific immunogen.

**Specificity/Sensitivity** GSK3α/β (Ab-279/216) antibody detects endogenous levels of total GSK3α/β protein.

**Reactivity:** Human, Mouse, Rat

**Applications:** WB: 1:500~1:1000 IHC: 1:50~1:100

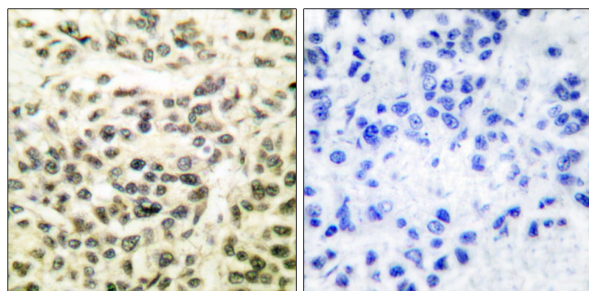
ELISA: 1:20000

**References:** Minsub Shim, J. Biol. Chem., May 2003; 278: 19674 -19681.

Junichi Gotoh Carcinogenesis, Mar 2003; 24: 435 - 442.

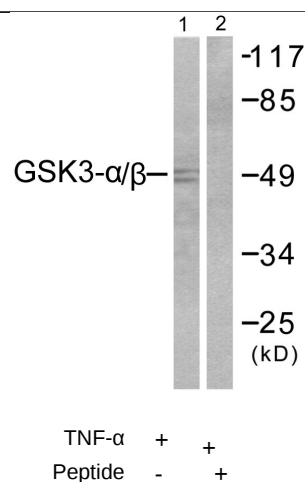
Katrina MacAulay, J. Biol. Chem., Mar 2005; 280: 9509 - 9518.

Victor H. Bustos, PNAS, Dec 2006; 103: 19725 - 19730.



Peptide - +

Immunohistochemical analysis of paraffin-embedded human breast carcinoma tissue using GSK3α/β (Ab-279/216) antibody (#B0012).



Western blot analysis of extracts from 293 cells, treated with TNF-α (20ng/ml, 30min), using GSK3α/β (Ab-279/216)

**For Research Use Only**

	antibody (#B0012, Line 1 and 2).
--	----------------------------------