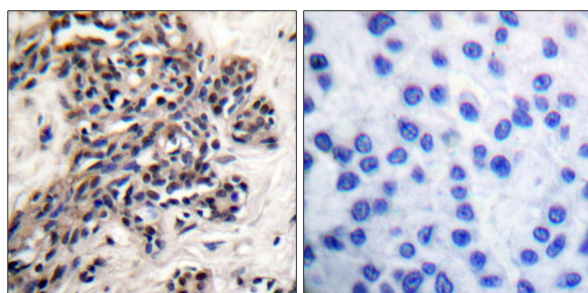




IκB-β (Phospho-Ser23) Antibody

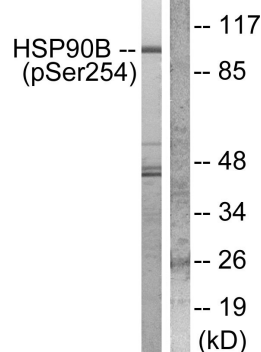
E11-0014A

- Catalog Number:** E11-0014A
- Amount:** 100μg/100μl
- Swiss-Prot No. :** P08238
- All Names:** HS90B, HSP 84, HSP90-beta, HSP90AB1, HSPC2, HSPCB, Heat shock protein HSP 90-beta
- All Sites:** Human: Ser254; Mouse: Ser254; Rat: Ser254
- Form of Antibody:** Rabbit IgG in phosphate buffered saline (without Mg²⁺ and Ca²⁺), pH 7.4, 150mM NaCl, 0.02% sodium azide and 50% glycerol.
- Storage/Stability:** Store at -20°C/1 year
- Immunogen:** The antiserum was produced against synthesized phosphopeptide derived from human HSP90B around the phosphorylation site of serine 254 (V-G-S^P-D-E).
- Purification:** The antibody was affinity-purified from rabbit antiserum by affinity-chromatography using epitope-specific phosphopeptide. The antibody against non-phosphopeptide was removed by chromatography using non-phosphopeptide corresponding to the phosphorylation site.
- Specificity/Sensitivity:** HSP90B (phospho-Ser254) antibody detects endogenous levels of HSP90B only when phosphorylated at serine 254.
- Reactivity:** Human, Mouse, Rat
- Applications:** WB: 1:500~1000 IHC: 1:50~100
IF: 1:100~1:500 ELISA: 1:40000
- References:** Lothar Goretzki, AACR Meeting Abstracts, Apr 2006; 2006: 468.
Jean-François Louvion, Mol. Biol. Cell, Nov 1998; 9: 3071.
Angelika Lueking, Mol. Cell. Proteomics, Dec 2003; 2: 1342.
Jason Fontana Circ, Res., May 2002; 90: 866.



P-peptide - +

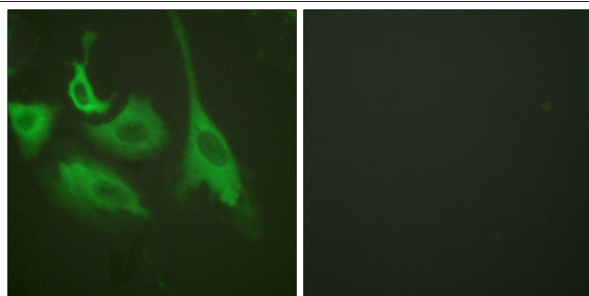
Immunohistochemical analysis of paraffin-embedded human breast carcinoma tissue using HSP90B (phospho-Ser254) antibody.



TNF-α + +
P-peptide - +

Western blot analysis of extracts from Hela cells treated with TNF-α (20ng/ml, 30mins), using HSP90B (phospho-Ser254) antibody.

For Research Use Only



TNF-a + -

Immunofluorescence analysis of HeLa cells, treated with TNF-a (20nM, 15mins), using HSP90B (phospho-Ser254) antibody (#11313).