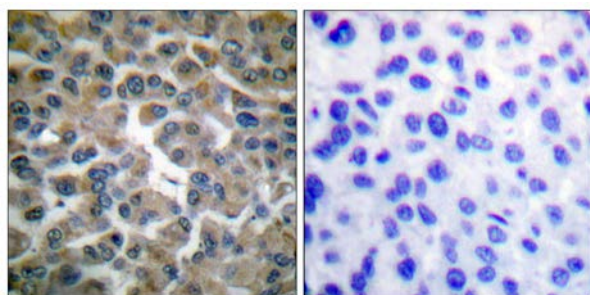




## IκB-ε (Ab-22) Antibody

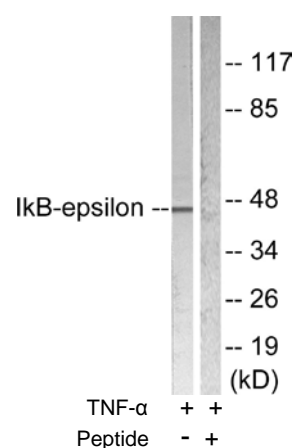
E11-0015B

- Catalog Number:** E11-0015B
- Amount:** 100μg/100μl
- Swiss-Prot No. :** O00221
- All Names:** I-kappa-B-epsilon, IKBE, IkappaBepsilon, NF-kappa-BIE, NF-kappaB inhibitor epsilon, NFKBIE
- Form of Antibody:** Rabbit IgG in phosphate buffered saline (without Mg<sup>2+</sup> and Ca<sup>2+</sup>), pH 7.4, 150mM NaCl, 0.02% sodium azide and 50% glycerol.
- Storage/Stability:** Store at -20°C/1 year
- Immunogen:** The antiserum was produced against synthesized non-phosphopeptide derived from human IκB-ε around the phosphorylation site of serine 22 (I-E-S<sup>P</sup>-L-R).
- Purification:** The antibody was affinity-purified from rabbit antiserum by affinity-chromatography using epitope-specific immunogen.
- Specificity/Sensitivity** IκB-ε (Ab-22) antibody detects endogenous levels of total IκB-ε protein.
- Reactivity:** Human, Mouse, Rat
- Applications:** WB: 1:500~1000 IHC: 1:50~100  
IF: 1:100~1:500 ELISA: 1:40000
- References:** David C. Hay Mol. Cell. Biol., May 2001; 21: 3482 - 3490.  
Fumitaka Fujita Mol. Cell. Biol., Nov 2003; 23: 7780 - 7793.  
Dan Tapalaga J. Histochem. Cytochem., Dec 2002; 50: 1599.



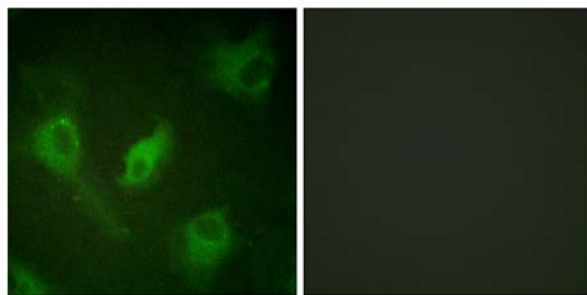
Peptide                      -                      +

Immunohistochemical analysis of paraffin-embedded human breast carcinoma tissue using IκB-ε (Ab-22) antibody (#B0015).



Western blot analysis of extracts from HeLa cells treated with TNF-α (20ng/ml 5min), using IκB-ε (Ab-22) antibody (#B0015, Line 1 and 2).

**For Research Use Only**



Peptide

-

+

Immunofluorescence analysis of HeLa cells, using IkB- $\epsilon$  (Ab-22) antibody (#B0015).