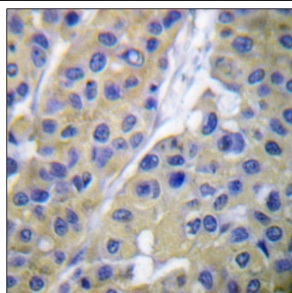




Keratin 18 (Phospho-Ser33) Antibody

E11-0016A

Catalog Number:	E11-0016A
Amount:	100µg/100µl
Swiss-Prot No. :	P05783
All Names:	CK 18, CK18, CYK18, Cytokeratin endo B, K18, K1C18, KERD, KRT1-18, KRT18, Keratin, Keratin D, Keratin, type I cytoskeletal 18, cytokeratin 18, type I cytoskeletal 18
All Sites:	Human: Ser33
Form of Antibody:	Rabbit IgG in phosphate buffered saline (without Mg ²⁺ and Ca ²⁺), pH 7.4, 150mM NaCl, 0.02% sodium azide and 50% glycerol.
Storage/Stability:	Store at -20°C/1 year
Immunogen:	The antiserum was produced against synthesized phosphopeptide derived from human Keratin 18 around the phosphorylation site of serine 33 (A-A-S ^P -V-Y).
Purification:	The antibody was affinity-purified from rabbit antiserum by affinity-chromatography using epitope-specific phosphopeptide. The antibody against non-phosphopeptide was removed by chromatography using non-phosphopeptide corresponding to the phosphorylation site.
Specificity/Sensitivity:	Keratin 18 (phospho-Ser33) antibody detects endogenous levels of Keratin 18 only when phosphorylated at serine 33.
Reactivity:	Human
Applications:	WB: 1:500~1000 IHC: 1:50~1:100 IF: 1:100~1:500 ELISA: 1:5000
References:	J Liao, J. Cell Biol., Dec 1995; 131: 1291. CF Chou and MB Omary, J. Biol. Chem., Feb 1993; 268: 4465 - 4472. NO Ku and MB Omary, J. Cell Biol., Oct 1994; 127: 161. Nam-On Ku J. Cell Biol., May 2000; 149: 547.

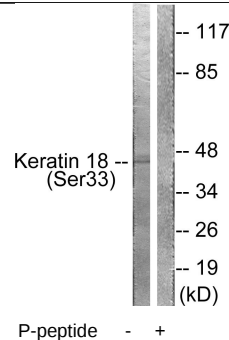
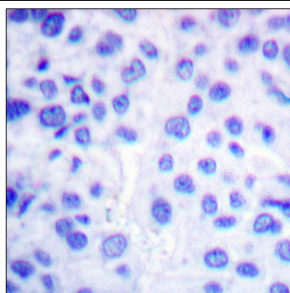


P-peptide

-

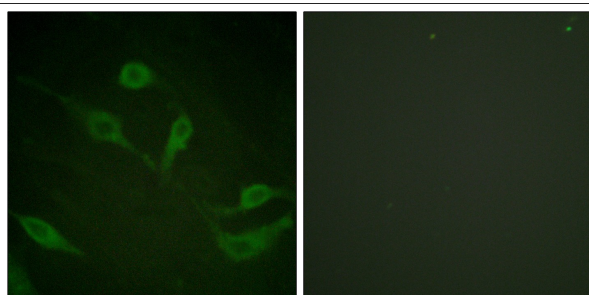
+

Immunohistochemical analysis of paraffin-embedded human breast carcinoma tissue using Keratin 18 (phospho-Ser33) antibody.



Western blot analysis of extracts from HT29 cells, using Keratin 18 (phospho-Ser33) antibody.

For Research Use Only



P-peptide - +

Immunofluorescence analysis of HeLa cells, using Keratin 18 (phospho-Ser33) antibody (#11316).