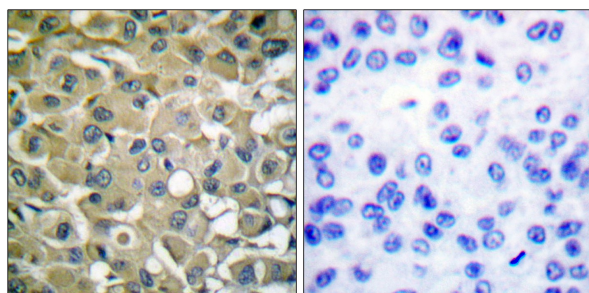




Keratin 18 (Ab-33) Antibody

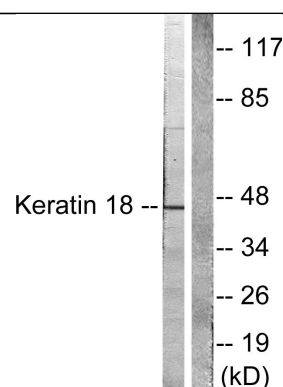
E11-0016B

- Catalog Number:** E11-0016B
- Amount:** 100µg/100µl
- Swiss-Prot No. :** P05783
- All Names:** CK 18, CK18, CYK18, Cytokeratin endo B, K18, K1C18, KERD, KRT1-18, KRT18, Keratin, Keratin D, Keratin, type I cytoskeletal 18, cytokeratin 18, type I cytoskeletal 18
- Form of Antibody:** Rabbit IgG in phosphate buffered saline (without Mg²⁺ and Ca²⁺), pH 7.4, 150mM NaCl, 0.02% sodium azide and 50% glycerol.
- Storage/Stability:** Store at -20°C/1 year
- Immunogen:** The antiserum was produced against synthesized non-phosphopeptide derived from human Keratin 18 around the phosphorylation site of serine 33 (A-A-S^P-V-Y).
- Purification:** The antibody was affinity-purified from rabbit antiserum by affinity-chromatography using epitope-specific immunogen.
- Specificity/Sensitivity:** Keratin 18 (Ab-33) antibody detects endogenous levels of total Keratin 18 protein.
- Reactivity:** Human
- Applications:** WB: 1:500~1000 IHC: 1:50~100 IP: Various Dilution
IF: 1:100~1:500 ELISA: 1:40000
- References:** J Liao, J. Cell Biol., Dec 1995; 131: 1291.
CF Chou and MB Omary, J. Biol. Chem., Feb 1993; 268: 4465 - 4472.
NO Ku and MB Omary, J. Cell Biol., Oct 1994; 127: 161.
Nam-On Ku J. Cell Biol., May 2000; 149: 547.



Peptide - +

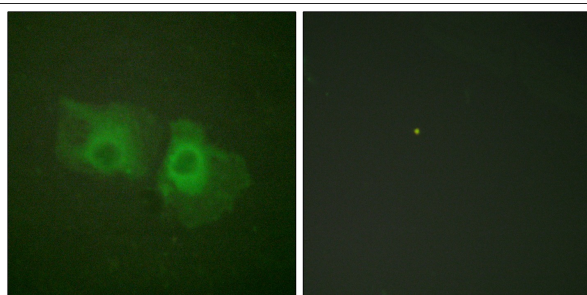
Immunohistochemical analysis of paraffin-embedded human breast carcinoma tissue using Keratin 18 (Ab-33) antibody (#B0016).



UV + +
Peptide - +

Western blot analysis of extracts from HeLa cells treated with UV (5min), using Keratin 18 (Ab-33) antibody (#B0016, Line 1 and 2).

For Research Use Only



Peptide - +

Immunofluorescence analysis of HeLa cells, using Keratin 18 (Ab-33) antibody (#B0016).