



Keratin 8 (Phospho-Ser73) Antibody

E11-0017A

Catalog Number: E11-0017A

Amount: 100µg/100µl

Swiss-Prot No. : P05787

All Names: CK 8, CK8, CYK8, Cytokeratin endo A, K2C8, K8, KRT2-8, KRT8, Keratin, type II cytoskeletal 8, cytokeratin 8

All Sites: Human: Ser73; Mouse: Ser79

Form of Antibody: Rabbit IgG in phosphate buffered saline (without Mg^{2+} and Ca^{2+}), pH 7.4, 150mM NaCl, 0.02% sodium azide and 50% glycerol.

Storage/Stability: Store at -20°C/1 year

Immunogen: The antiserum was produced against synthesized phosphopeptide derived from human Keratin 8 around the phosphorylation site of serine 73 (L-L-S^P-P-L).

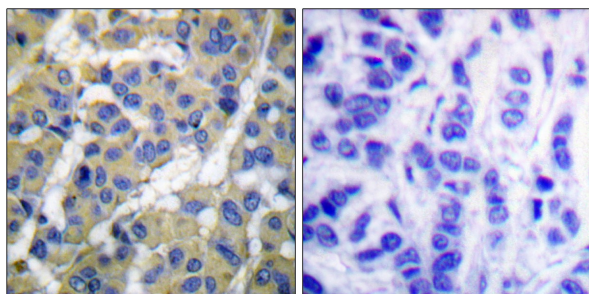
Purification: The antibody was affinity-purified from rabbit antiserum by affinity-chromatography using epitope-specific phosphopeptide. The antibody against non-phosphopeptide was removed by chromatography using non-phosphopeptide corresponding to the phosphorylation site.

Specificity/Sensitivity: Keratin 8 (phospho-Ser73) antibody detects endogenous levels of Keratin 8 only when phosphorylated at serine 73.

Reactivity: Human, Mouse

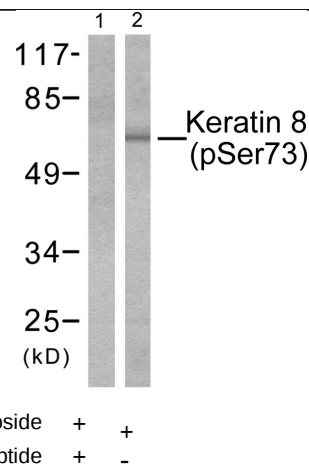
Applications: WB: 1:500~1000 IHC: 1:50~100
ELISA: 1:40000

References: Nam-On Ku J. Biol. Chem., Mar 2002; 277: 10775 - 10782.
Karen M. Ridge J. Biol. Chem., Aug 2005; 280: 30400 - 30405.
Nam-On Ku J. Biol. Chem., Mar 1997; 272: 7556.
Gary K. Scott Mol. Pharmacol., Sep 2005; 68: 606 - 615.



P-peptide - +

Immunohistochemical analysis of paraffin-embedded human breast carcinoma tissue using Keratin 8 (phospho-Ser73) antibody.



Western blot analysis of extracts from 293 cells treated with Etoposide (25uM, 60mins), using Keratin 8 (phospho-Ser73) antibody.

For Research Use Only

For Research Use Only