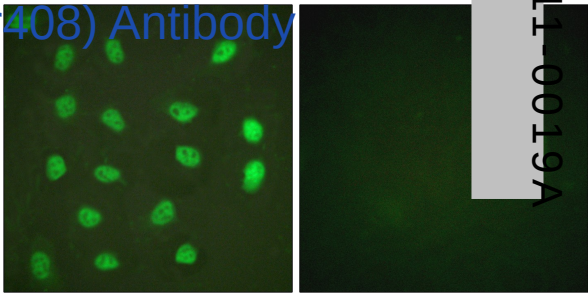




## MEF2A (Phospho-Ser408) Antibody

E11-0019A



**Catalog Number:** E11-0019A

**Amount:** 100µg/100µl

**Swiss-Prot No. :** Q02078

**All Names:** MEF2, Myocyte-specific enhancer factor 2A, Serum response factor-like protein 1

**All Sites:** Human: Ser408; Mouse: Ser406; Rat: Ser400

**Form of Antibody:** Rabbit IgG in phosphate buffered saline (without Mg<sup>2+</sup> and Ca<sup>2+</sup>), pH 7.4, 150mM NaCl, 0.02% sodium azide and 50% glycerol.

**Storage/Stability:** Store at -20°C/1 year

**Immunogen:** The antiserum was produced against synthesized phosphopeptide derived from human MEF2A around the phosphorylation site of Serine 408 (PSP-119).

**Purification:** The antibody was affinity-purified from rabbit antiserum by affinity-chromatography using epitope-specific phosphopeptide. The antibody against non-phosphopeptide was removed by chromatography using non-phosphopeptide corresponding to the phosphorylation site.

**Specificity/Sensitivity:** MEF2A (phospho-Ser408) antibody detects endogenous levels of MEF2A only when phosphorylated at serine 408.

**Reactivity:** Human, Mouse, Rat

**Applications:** WB: 1:500~1000 IHC: 1:50~100

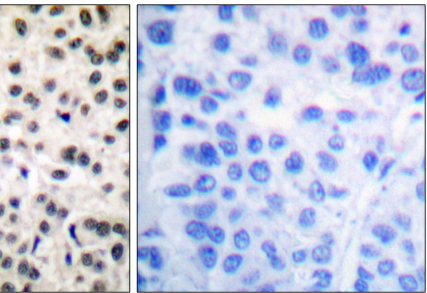
IF: 1:100~1:500 ELISA: 1:40000

**References:** Cyril Rauch, Am J Physiol Cell Physiol, Mar 2005; 288: C593 - C605.

OI Ornatsky, Nucleic Acids Res., Jul 1999; 27: 2646 - 2654.

David P. Sparling, Am J Physiol Endocrinol Metab, Apr 2007; 292: E1149 - E1156.

Eric N. Olson Sci, Aging Knowl. Environ., Dec 2003; 2003: 33.



Immunohistochemical analysis of paraffin-embedded carcinoma tissue using MEF2A (phospho-Ser408) antibody.

MEF2A -  
(pSer408)

PMA + +

P-peptide - +

Western blot analysis of extracts from HeLa cells treated with PMA (125ng/ml, 30mins), P-peptide (1µg/ml, 30mins), and MEF2A (phospho-Ser408) antibody.

**For Research Use Only**