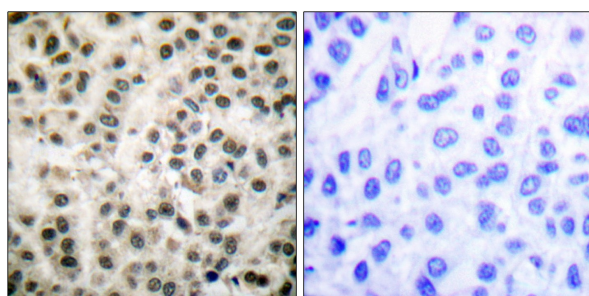




MEF2A (Ab-408) Antibody

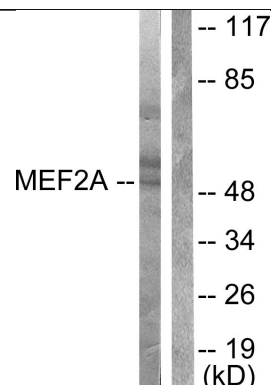
E11-0019B

- Catalog Number:** E11-0019B
- Amount:** 100µg/100µl
- Swiss-Prot No. :** Q02078
- All Names:** MEF2, Myocyte-specific enhancer factor 2A, Serum response factor-like protein 1
- Form of Antibody:** Rabbit IgG in phosphate buffered saline (without Mg²⁺ and Ca²⁺), pH 7.4, 150mM NaCl, 0.02% sodium azide and 50% glycerol.
- Storage/Stability:** Store at -20°C/1 year
- Immunogen:** The antiserum was produced against synthesized non-phosphopeptide derived from human MEF2A around the phosphorylation site of serine 408 (P-I-S^P-P-P).
- Purification:** The antibody was affinity-purified from rabbit antiserum by affinity-chromatography using epitope-specific immunogen.
- Specificity/Sensitivity** MEF2A (Ab-408) antibody detects endogenous levels of total MEF2A protein.
- Reactivity:** Human, Mouse, Rat
- Applications:** WB: 1:500~1000 IHC: 1:50~100
IF: 1:100~1:500 ELISA: 1:40000
- References:** Cyril Rauch, Am J Physiol Cell Physiol, Mar 2005; 288: C593 - C605.
Ol Ornatsky, Nucleic Acids Res., Jul 1999; 27: 2646 - 2654.
David P. Sparling, Am J Physiol Endocrinol Metab, Apr 2007; 292: E1149 - E1156.
Eric N. Olson Sci, Aging Knowl. Environ., Dec 2003; 2003: 33.



Peptide - +

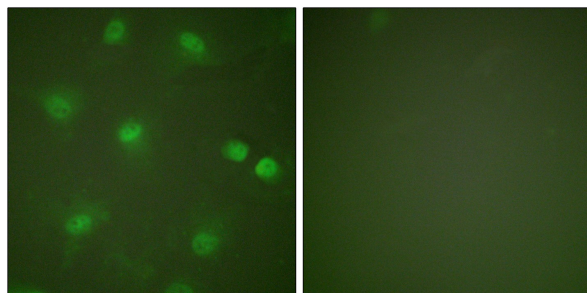
Immunohistochemical analysis of paraffin-embedded human breast carcinoma tissue using MEF2A (Ab-408) antibody (#B0019).



PMA + +
Peptide - +

Western blot analysis of extracts from HeLa cells treated with PMA (125ng/ml, 30min), using MEF2A (Ab-408) antibody (#B0019, Line 1 and 2).

For Research Use Only



PMA + -

Immunofluorescence analysis of HeLa cells, treated with PMA (125ng/ml, 30mins), using MEF2A (Ab-408) antibody (#B0019).