



## SHP-2 (Ab-542) Antibody

E11-0027B

**Catalog Number:** E11-0027B

**Amount:** 100µg/100µl

**Swiss-Prot No. :** Q06124

**All Names:** EC 3.1.3.48, PTN11, PTP-1D, PTP-2C, PTP2C, PTPN11, Protein-tyrosine phosphatase 2C, Protein-tyrosine phosphatase, non-receptor type 11, SH-PTP2, SH-PTP3, SHPTP2

**Form of Antibody:** Rabbit IgG in phosphate buffered saline (without  $Mg^{2+}$  and  $Ca^{2+}$ ), pH 7.4, 150mM NaCl, 0.02% sodium azide and 50% glycerol.

**Storage/Stability:** Store at -20°C/1 year

**Immunogen:** The antiserum was produced against synthesized non-phosphopeptide derived from human SHP-2 around the phosphorylation site of tyrosine542 (H-E-Y<sup>P</sup>-T-N).

**Purification:** The antibody was affinity-purified from rabbit antiserum by affinity-chromatography using epitope-specific immunogen.

**Specificity/Sensitivity** SHP-2 (Ab-542) antibody detects endogenous levels of total SHP-2 protein.

**Reactivity:** Human, Mouse, Rat

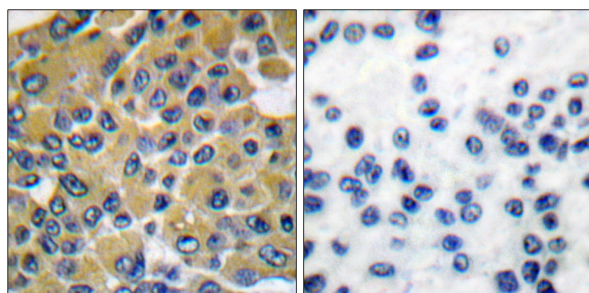
**Applications:** WB: 1:500~1000 IHC: 1:50~100  
ELISA: 1:40000

**References:** Minako Yamaoka-Tojo, Arterioscler. Thromb. Vasc. Biol., Sep 2006; 26: 1991 - 1997.

Liang Liang, Endocrinology, Sep 2000; 141: 3328.

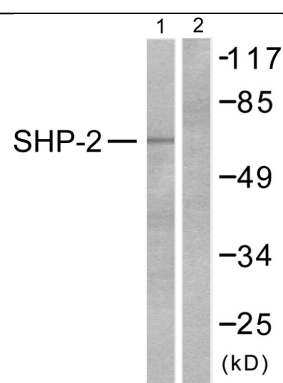
Tony Avril, J. Immunol., Dec 2004; 173: 6841 - 6849.

Laura A. Maile, Mol. Biol. Cell, Sep 2003; 14: 3519.



Peptide - +

Immunohistochemical analysis of paraffin-embedded human breast carcinoma tissue using SHP-2 (Ab-542) antibody (#B0027).



Peptide - +

Western blot analysis of extracts from A431 cells, using SHP-2 (Ab-542) antibody (#B0027, Line 1 and 2).

**For Research Use Only**

**For Research Use Only**