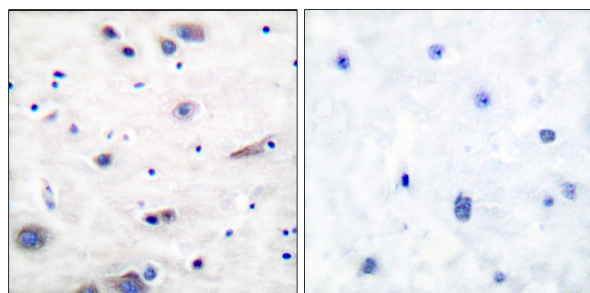


SHP-2 (Phospho-Tyr580) Antibody

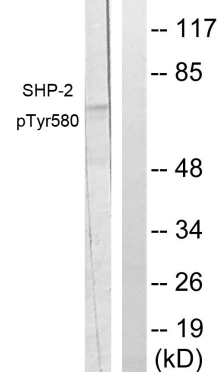
E11-0028A

- Catalog Number:** E11-0028A
- Amount:** 100µg/100µl
- Swiss-Prot No. :** Q06124
- All Names:** EC 3.1.3.48, PTN11, PTP-1D, PTP-2C, PTP2C, PTPN11, Protein-tyrosine phosphatase 2C, Protein-tyrosine phosphatase, non-receptor type 11, SH-PTP2, SH-PTP3, SHPTP2
- All Sites:** Human: Tyr580; Mouse: Tyr584; Rat: Tyr580
- Form of Antibody:** Rabbit IgG in phosphate buffered saline (without Mg^{2+} and Ca^{2+}), pH 7.4, 150mM NaCl, 0.02% sodium azide and 50% glycerol.
- Storage/Stability:** Store at -20°C/1 year
- Immunogen:** The antiserum was produced against synthesized phosphopeptide derived from human SHP-2 around the phosphorylation site of tyrosine 580 (R-V-Y^P-E-N).
- Purification:** The antibody was affinity-purified from rabbit antiserum by affinity-chromatography using epitope-specific phosphopeptide. The antibody against non-phosphopeptide was removed by chromatography using non-phosphopeptide corresponding to the phosphorylation site.
- Specificity/Sensitivity:** SHP-2(phospho-Tyr580) antibody detects endogenous levels of SHP-2 only when phosphorylated at tyrosine 580.
- Reactivity:** Human, Mouse, Rat
- Applications:** WB: 1:500~1:1000 IHC: 1:50~1:100
ELISA: 1:40000
- References:** Minako Yamaoka-Tojo, Arterioscler. Thromb. Vasc. Biol., Sep 2006; 26: 1991 - 1997.
Liang Liang, Endocrinology, Sep 2000; 141: 3328.
Tony Avril, J. Immunol., Dec 2004; 173: 6841 - 6849.
Laura A. Maile, Mol. Biol. Cell, Sep 2003; 14: 3519.



P-peptide - +

Immunohistochemical analysis of paraffin-embedded human brain tissue using SHP-2 (phospho-Tyr580) antibody.



P-peptide - +

Western blot analysis of extracts from A431 cells, using SHP-2 (phospho-Tyr580) antibody.

For Research Use Only

For Research Use Only