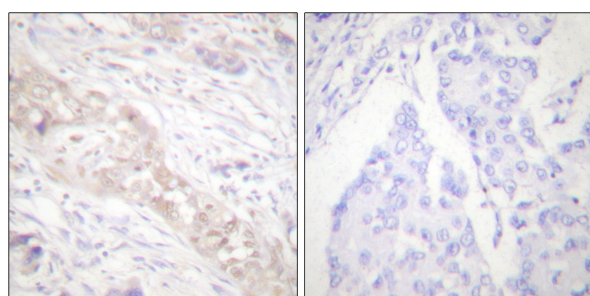


EnoGene Smad2 (Phospho-Ser467) Antibody

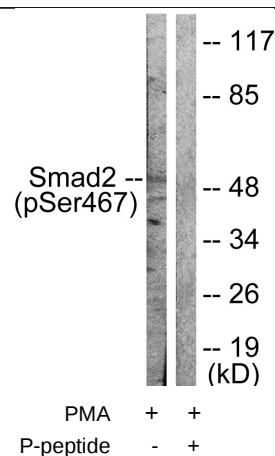
E11-0030A

- Catalog Number:** E11-0030A
- Amount:** 100µg/100µl
- Swiss-Prot No. :** Q15796
- All Names:** JV18-1, MADH2, MADR2, Mad-related protein 2, Mothers against DPP homolog 2, Mothers against decapentaplegic homolog 2, Smad 2
- All Sites:** Human: Ser467; Mouse: Ser467; Rat: Ser467
- Form of Antibody:** Rabbit IgG in phosphate buffered saline (without Mg²⁺ and Ca²⁺), pH 7.4, 150mM NaCl, 0.02% sodium azide and 50% glycerol.
- Storage/Stability:** Store at -20°C/1 year
- Immunogen:** The antiserum was produced against synthesized phosphopeptide derived from human Smad2 around the phosphorylation site of serine 467 (C-S-S-M-S^P).
- Purification:** The antibody was affinity-purified from rabbit antiserum by affinity-chromatography using epitope-specific phosphopeptide. The antibody against non-phosphopeptide was removed by chromatography using non-phosphopeptide corresponding to the phosphorylation site.
- Specificity/Sensitivity:** Smad2 (Phospho-Ser467) antibody detects endogenous levels of Smad2 only when phosphorylated at serine 467.
- Reactivity:** Human, Mouse, Rat
- Applications:** WB: 1:500~1000 IHC: 1:50~1:100
ELISA: 1:5000
- References:** Kamaraju AK, J Biol Chem 2005 Jan 14; 280(2): 1024-36.
Ottesen JJ, Biochemistry 2004 May 18; 43(19): 5698-706.
Bourguignon LY, J Biol Chem 2002 Oct 18; 277(42): 39703-12.
Souchelnytskyi S, J Biol Chem 1997 Oct; 272(44): 28107-15.



P-peptide - +

Immunohistochemical analysis of paraffin-embedded human breast carcinoma tissue using Smad2 (Phospho-Ser467) antibody (#A0030).



Western blot analysis of extracts from HeLa cells treated with PMA (125ng/ml, 15mins), using Smad2 (Phospho-Ser467) antibody (#A0030).

For Research Use Only

For Research Use Only