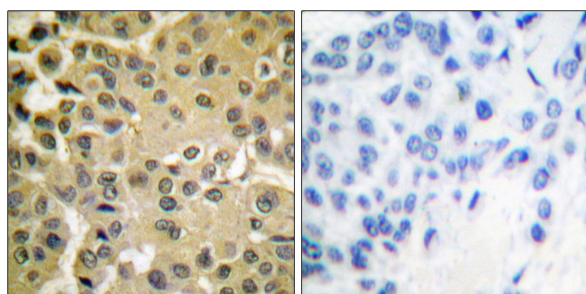


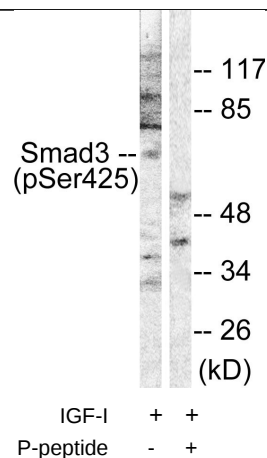
EnoGene Smad3 (Phospho-Ser425) Antibody

Catalog Number:	E11-0031A
Amount:	100µg/100µl
Swiss-Prot No. :	P84022
All Names:	JV15-2, MAD-3, MADH3, Mad3, Mothers against DPP homolog 3, Mothers against decapentaplegic homolog 3, SMAD 3, Smad 3
All Sites:	Human: Ser425; Mouse: Ser425; Rat: Ser425
Form of Antibody:	Rabbit IgG in phosphate buffered saline (without Mg ²⁺ and Ca ²⁺), pH 7.4, 150mM NaCl, 0.02% sodium azide and 50% glycerol.
Storage/Stability:	Store at -20°C/1 year
Immunogen:	The antiserum was produced against synthesized phosphopeptide derived from human Smad3 around the phosphorylation site of serine 425 (C-S-S-V-S ^P).
Purification:	The antibody was affinity-purified from rabbit antiserum by affinity-chromatography using epitope-specific phosphopeptide. The antibody against non-phosphopeptide was removed by chromatography using non-phosphopeptide corresponding to the phosphorylation site.
Specificity/Sensitivity:	Smad3 (phospho-Ser425) antibody detects endogenous levels of Smad3 only when phosphorylated at serine 425.
Reactivity:	Human, Mouse, Rat
Applications:	WB: 1:500~1:1000 IHC: 1:50~1:100 ELISA: 1:40000
References:	Suvi-Katri Leivonen, AACR Meeting Abstracts, Mar 2004; 2004: 530. Baljit Walia, FASEB J, Sep 2003; 10.1096/fj.02-1211fje. Evangelia Pardali, J. Biol. Chem., Feb 2000; 275: 3552. HUGO CEULEMANS, Physiol Rev, Jan 2004; 84: 1.



P-peptide - +

Immunohistochemical analysis of paraffin-embedded human breast carcinoma tissue using Smad3 (phospho-Ser425) antibody.



Western blot analysis of extracts from NIH/3T3 cells treated with IGF-I (100ng/ml, 10mins), using Smad3 (phospho-Ser425) antibody.

For Research Use Only

For Research Use Only