



Smad3(Ab-425) Antibody

E11-0031B

Catalog Number: E11-0031B

Concentration: 1mg/ml

Swiss-Prot No.: P84022

Other Names: JV15-2, MAD-3, MADH3, Mad3, Mothers against DPP homolog 3, Mothers against decapentaplegic homolog 3, SMAD 3, Smad 3

Storage/Stability: Store at -20°C/1 year

Form of Antibody: Rabbit IgG in phosphate buffered saline (without Mg²⁺ and Ca²⁺), pH 7.4, 150mM NaCl, 0.02% sodium azide and 50% glycerol.

Immunogen: The antiserum was produced against synthesized non-phosphopeptide derived from human

Smad3 around the phosphorylation site of serine 425 (C-S-S-V-S^P).

Purification: The antibody was affinity-purified from rabbit antiserum by affinity-chromatography using epitope-specific immunogen.

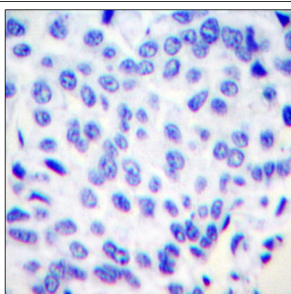
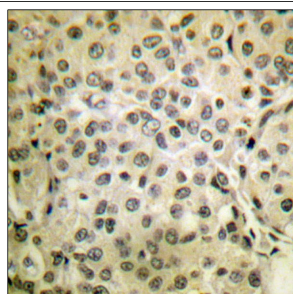
Specificity: Smad3 (Ab-425) antibody detects endogenous levels of total Smad3 protein.

Reactivity: Human, Mouse, Rat

Applications: WB: 1:500~1:1000 IHC: 1:50~1:100
ELISA: 1:20000

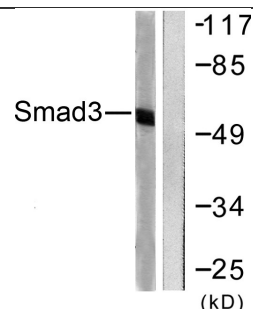
References:

Baljit Walia, FASEB J, Sep 2003; 10.1096/fj.02-1211fje.
Evangelia Pardali, J. Biol. Chem., Feb 2000; 275: 3552.
HUGO CEULEMANS, Physiol Rev, Jan 2004; 84: 1.



Peptide - +

Immunohistochemical analysis of paraffin-embedded human breast carcinoma tissue using Smad3 (Ab-425) antibody.



UV + +
Peptide - +

Western blot analysis of extracts from 293 cells, treated with UV (5mins), Smad3 (Ab-425) antibody.

For Research Use Only