



## Akt (Phospho-Thr308) Antibody

E11-0042A

**Catalog Number:** E11-0042A

**Concentration:** 1mg/ml

**Swiss-Prot No.:** P31749/P31751/Q9Y243

**Other Names:** AKT; AKT1 kinase; C-AKT; kinase Akt1; PKB; PKB-alpha; Protein kinase B; RAC; RAC-alpha serine/threonine kinase; RAC-PK-alpha

**Storage/Stability:** Store at -20°C/1 year

**Form of Antibody:** Rabbit IgG in phosphate buffered saline (without  $Mg^{2+}$  and  $Ca^{2+}$ ), pH 7.4, 150mM NaCl, 0.02% sodium azide and 50% glycerol.

**Immunogen:** The antiserum was produced against synthesized phosphopeptide derived from human Akt

**Purification:** The antibody was affinity-purified from rabbit antiserum by affinity-chromatography using epitope-specific immunogen.

**Specificity:** Akt (Phospho-Thr308) Antibody detects endogenous levels of Akt only when phosphorylated at Thr 308.

**Reactivity:** Human

**Applications:** WB: 1:500~1:1000 ELISA: 1:1000

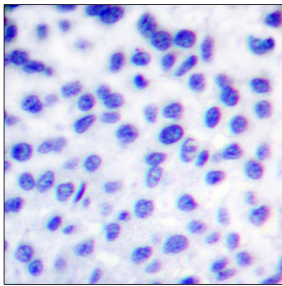
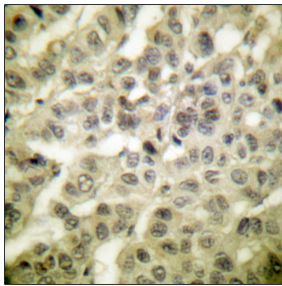
IHC: 1:50~1:200

**References:**

Payaningal R. Somanath, J. Biol. Chem., Jun 2007; 10.1074.

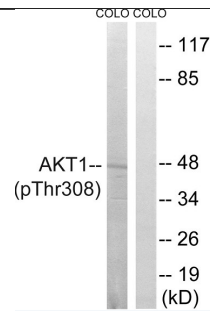
Xiaoming Ju, PNAS, May 2007; 104: 7438 - 7443.

Brian DeBosch, Circulation, May 2006; 113: 2097 - 2104



P-peptide                      -                      +

Immunohistochemistry analysis of paraffin-embedded human breast carcinoma tissue using Akt (Phospho-Thr308) antibody.



P-peptide                      -                      +

Western blot analysis of extracts from COLO, using Akt (Phospho-Thr308) antibody.