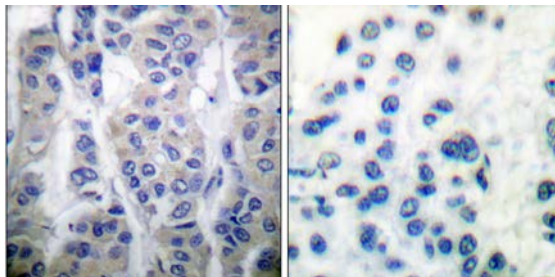




LIMK1/2 (Phospho-Thr508/505) Antibody

E11-0047A

- Catalog Number:** E11-0047A
Amount: 100µg/100µl
Swiss-Prot No. : P53667
All Names: LIM domain kinase 1, LIMK-1, EC=2.7.11.1, LIMK1, LIMK
Form of Antibody: Rabbit IgG in phosphate buffered saline (without Mg^{2+} and Ca^{2+}), pH 7.4, 150mM NaCl, 0.02% sodium azide and 50% glycerol.
Storage/Stability: Store at -20°C/1 year
Immunogen: The antiserum was produced against synthesized phosphopeptide derived from human LIMK1/2 around the phosphorylation site of Thr508/505.
Purification: The antibody was affinity-purified from rabbit antiserum by affinity-chromatography using epitope-specific phosphopeptide.
Specificity/Sensitivity: LIMK1/2 (Phospho-Thr508/505) Antibody detects endogenous levels of LIMK1/2 only when phosphorylated at Thr508/505.
Reactivity: H:T508, M:T508, R:T508
Applications: WB: 1:500~1:1000 IHC: 1:50~1:100
ELISA: 1:10000
References: Miyata T., Nakamura T. Oncogene 9:1605-1612(1994)
Edwards D.C., Gill G.N.J. Biol. Chem.
Fewell G.A., Delehaunty K.D., Miner T.L. Wilson R.K. Nature



P-peptide

-

+

Immunohistochemical analysis of paraffin-embedded human lung carcinoma tissue using LIMK1/2 (Phospho-Thr508/505) Antibody.

For Research Use Only