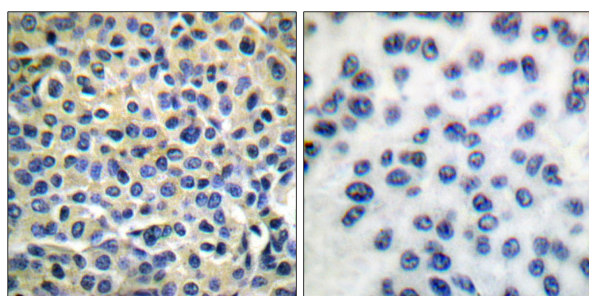




MED17 Antibody

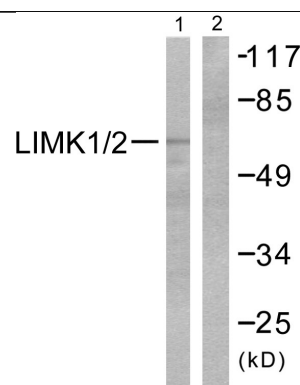
E11-0047B

- Catalog Number:** E11-0047B
- Amount:** 100µg/100µl
- Swiss-Prot No. :** P53667/P53671
- All Names:** EC 2.7.11.1, LIM domain kinase 1/2, LIMK-1/2, kinase LIMK1/2
- Form of Antibody:** Rabbit IgG in phosphate buffered saline (without Mg²⁺ and Ca²⁺), pH 7.4, 150mM NaCl, 0.02% sodium azide and 50% glycerol.
- Storage/Stability:** Store at -20°C/1 year
- Immunogen:** The antiserum was produced against synthesized non-phosphopeptide derived from human LIMK1/2 around the phosphorylation site of threonine 508/505 (R-Y-T^P-V-V).
- Purification:** The antibody was affinity-purified from rabbit antiserum by affinity-chromatography using epitope-specific immunogen.
- Specificity/Sensitivity** LIMK1/2 (Ab-508/505) antibody detects endogenous levels of total LIMK1/2 protein.
- Reactivity:** Human, Mouse, Rat
- Applications:** WB: 1:500~1000 IHC: 1:50~100
ELISA: 1:40000
- References:** C. CHANDRA KUMAR, Ann. N.Y. Acad. Sci., Jan 1999; 886: 122.
Daniel R. Croft, Molecular and Cellular Biology, June 2006, p. 4612-4627, Vol. 26.
Daniel R. Croft, JCB, Volume 168, Number 2, 245-255.
Xinyu Chen, JCB, Volume 172, Number 5, 671-678.



Peptide - +

Immunohistochemical analysis of paraffin-embedded human breast carcinoma tissue using LIMK1/2 (Ab-508/505) antibody (#B0047).



Peptide - +

Western blot analysis of extracts from cos7 cells, using LIMK1/2 (Ab-508/505) antibody (#B0047, Line 1 and 2).

For Research Use Only