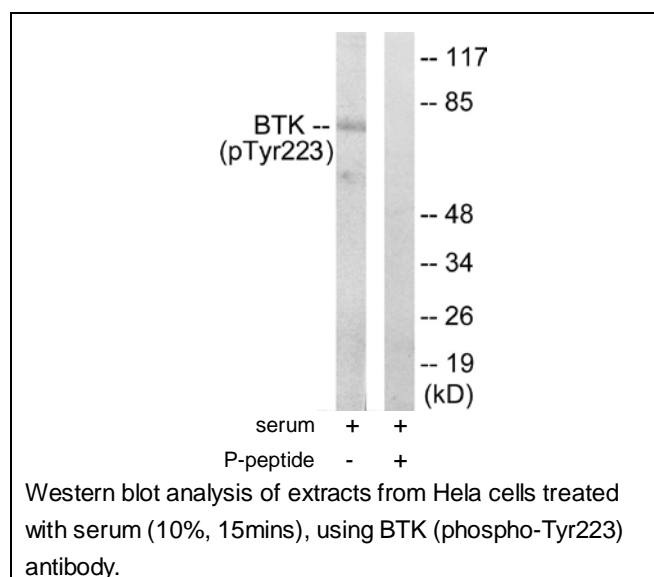




## BTK (Phospho-Tyr223) Antibody

E11-0054A

- Catalog Number:** E11-0054A
- Amount:** 100µg/100µl
- Swiss-Prot No. :** Q06187
- All Names:** AGMX1, ATK, Agammaglobulinaemia tyrosine kinase, B cell progenitor kinase, BPK, Bruton's tyrosine kinase, EC 2.7.10.2, Kinase EMB, kinase Btk
- All Sites:** Human: Tyr223; Mouse: Tyr223; Rat: Tyr224
- Form of Antibody:** Rabbit IgG in phosphate buffered saline (without  $Mg^{2+}$  and  $Ca^{2+}$ ), pH 7.4, 150mM NaCl, 0.02% sodium azide and 50% glycerol.
- Storage/Stability:** Store at -20°C/1 year
- Immunogen:** The antiserum was produced against synthesized phosphopeptide derived from human BTK around the phosphorylation site of tyrosine 223 (A-L-Y<sup>P</sup>-D-Y).
- Purification:** The antibody was affinity-purified from rabbit antiserum by affinity-chromatography using epitope-specific phosphopeptide. The antibody against non-phosphopeptide was removed by chromatography using non-phosphopeptide corresponding to the phosphorylation site.
- Specificity/Sensitivity:** BTK (phospho-Tyr223) antibody detects endogenous levels of BTK only when phosphorylated at tyrosine 223.
- Reactivity:** Human, Mouse, Rat
- Applications:** WB: 1:500~1:1000      ELISA: 1:40000
- References:** Sulekha Verma, J. Biol. Chem., Feb 2001; 276: 4671 - 4676.  
Yan M. Li, Cancer Res., Nov 2003; 63: 7630 - 7633.  
Malti Nikrad, Mol. Cancer Ther., Mar 2005; 4: 443 - 449.  
Feng Dong, Infect. Immun., Mar 2005; 73: 1861 - 1864.  
Hiroo Ueno, Mol. Biol. Cell, Feb 2000; 11: 735.  
Hidenori Hase, J. Biol. Chem., Nov 2002; 277: 46950 - 46958.



**For Research Use Only**