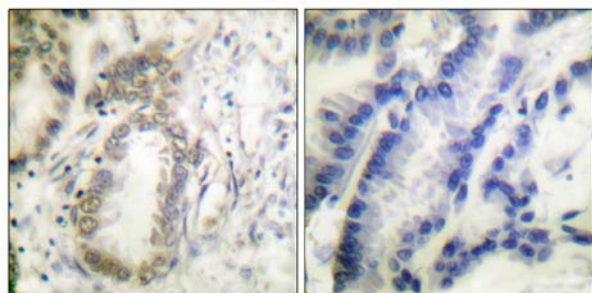




C/EBP- α (Phospho-Ser21) Antibody

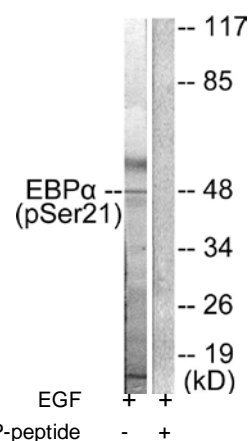
E11-0056A

- Catalog Number:** E11-0056A
- Amount:** 100 μ g/100 μ l
- Swiss-Prot No. :** P49715
- All Names:** Apoptotic cysteine protease, Apoptotic protease Mch-5, CAP4, Caspase-8 precursor, EC 3.4.22.-, FADD-homologous ICE/CED-3- like protease, FADD-like ICE, FLICE, ICE-like apoptotic protease 5, ICE8, MACH, MCH5, MORT1-associated CED-3 homolog
- All Sites:** Human: Ser21; Mouse: Ser21; Rat: Ser21
- Form of Antibody:** Rabbit IgG in phosphate buffered saline (without Mg²⁺ and Ca²⁺), pH 7.4, 150mM NaCl, 0.02% sodium azide and 50% glycerol.
- Storage/Stability:** Store at -20°C/1 year
- Immunogen:** The antiserum was produced against synthesized phosphopeptide derived from human C/EBP- α around the phosphorylation site of serine 21 (L-Q-S^P-P-P).
- Purification:** The antibody was affinity-purified from rabbit antiserum by affinity-chromatography using epitope-specific phosphopeptide. The antibody against non-phosphopeptide was removed by chromatography using non-phosphopeptide corresponding to the phosphorylation site.
- Specificity/Sensitivity:** C/EBP- α (phospho-Ser21) antibody detects endogenous levels of C/EBP- α only when phosphorylated at serine 21.
- Reactivity:** Human, Mouse, Rat
- Applications:** WB: 1:500~1:1000 IHC: 1:50~1:100
ELISA: 1:1000
- References:** Takashi Akasaka, Blood, Apr 2007; 109: 3451 - 3461.
Carolina Gillio-Meina, Biol Reprod, May 2005; 72: 1194 - 1204.
Raphaël Métivier, Mol. Endocrinol., Nov 2001; 15: 1953.
Neoncheol Jung, Eur. J. Biochem., Oct 2000; 267: 6180.



P-peptide - +

Immunohistochemical analysis of paraffin-embedded human colon carcinoma tissue using C/EBP- α (phospho-Ser21) antibody.



Western blot analysis of extracts from HepG2 cells treated with EGF (200ng/ml, 5mins), using C/EBP- α (phospho-Ser21) antibody.

For Research Use Only