



## C/EBP- $\alpha$ (Ab-21) Antibody

E11-0056B

**Catalog Number:** E11-0056B

**Concentration:** 1mg/ml

**Swiss-Prot No.:** P49715

**Other Names:** C/EBP alpha, CCAAT/enhancer binding protein alpha, CEBPA

**Storage/Stability:** Store at -20°C/1 year

**Form of Antibody:** Rabbit IgG in phosphate buffered saline (without  $Mg^{2+}$  and  $Ca^{2+}$ ), pH 7.4, 150mM NaCl, 0.02% sodium azide and 50% glycerol.

**Immunogen:** The antiserum was produced against synthesized non-phosphopeptide derived from human C/EBP- $\alpha$  around the phosphorylation site of serine 21

(L-Q-S<sup>P</sup>-P-P).

**Purification:** The antibody was affinity-purified from rabbit antiserum by affinity-chromatography using epitope-specific immunogen.

**Specificity:** C/EBP- $\alpha$  (Ab-21) antibody detects endogenous levels of total C/EBP- $\alpha$  protein.

**Reactivity:** Human, Mouse, Rat

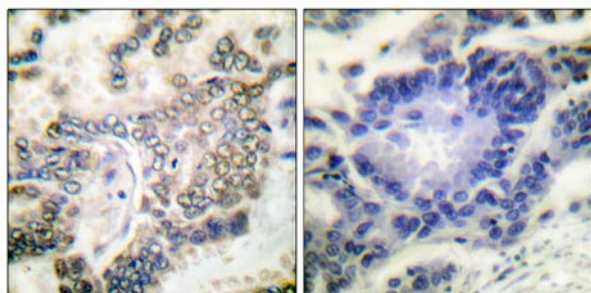
**Applications:** WB: 1:500~1:1000 IHC: 1:50~1:100  
ELISA: 1:5000

### References:

Takashi Akasaka, Blood, Apr 2007; 109: 3451 - 3461.

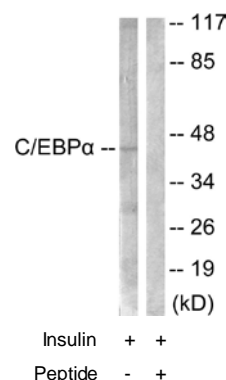
Carolina Gillio-Meina, Biol Reprod, May 2005; 72: 1194 - 1204.

Raphaël Métivier, Mol. Endocrinol., Nov 2001; 15: 1953.



Peptide - +

Immunohistochemical analysis of paraffin-embedded human lung carcinoma tissue, using C/EBP- $\alpha$  (Ab-21) antibody.



Western blot analysis of extracts from 293 cells treated with Insulin (0.01U/ml, 15mins), using C/EBP- $\alpha$  (Ab-21) antibody.

**For Research Use Only**