



C/EBP- β (Phospho-Thr235/188) Antibody

E11-0057A

Catalog Number: E11-0057A

Amount: 100 μ g/100 μ l

Swiss-Prot No. : P17676

All Names: AGP/EBP, C/EBP beta, C/EBP-related protein 2, CCAAT/enhancer binding protein beta, CEBPB, CRP2, IL-6DBP, Interleukin-6- dependent binding protein, LAP, Liver-enriched transcriptional activator, Nuclear factor NF-IL6, SF-B, SFB, Silencer factor B, TCF5, Transcription factor 5

All Sites: Human: Thr235; Mouse: Thr188; Rat: Thr189

Form of Antibody: Rabbit IgG in phosphate buffered saline (without Mg^{2+} and Ca^{2+}), pH 7.4, 150mM NaCl, 0.02% sodium azide and 50% glycerol.

Storage/Stability: Store at -20°C/1 year

Immunogen: The antiserum was produced against synthesized phosphopeptide derived from human C/EBP- β around the phosphorylation site of threonine 235/188 (P-G-T^P-P-S).

Purification: The antibody was affinity-purified from rabbit antiserum by affinity-chromatography using epitope-specific phosphopeptide. The antibody against non-phosphopeptide was removed by chromatography using non-phosphopeptide corresponding to the phosphorylation site.

Specificity/Sensitivity: C/EBP- β (phospho-Thr235/188) antibody detects endogenous levels of C/EBP- β only when phosphorylated at threonine 235/188.

Reactivity: Human, Mouse, Rat

Applications: WB: 1:500~1:1000 IHC: 1:50~1:100

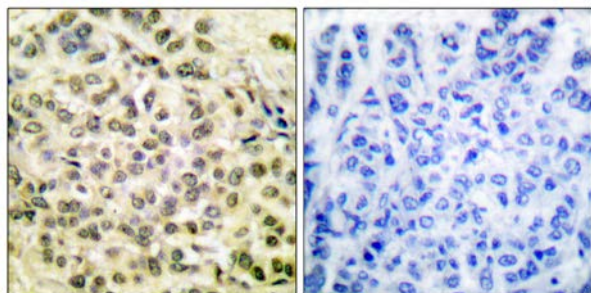
IF: 1:100~1:500 ELISA: 1:10000

References: Songyun Zhu, PNAS, Jan 2002; 99: 207.

Neoncheol Jung, Eur. J. Biochem., Oct 2000; 267: 6180.

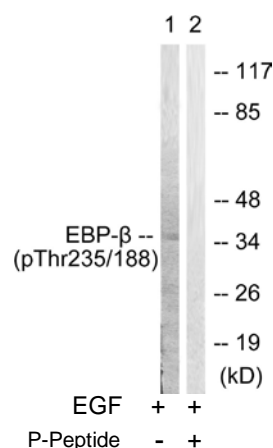
Béatrice Thomas, Eur. J. Biochem., Dec 2000; 267: 6798.

Edoardo Parrella, J. Biol. Chem., Oct 2004; 279: 42026 - 42040.



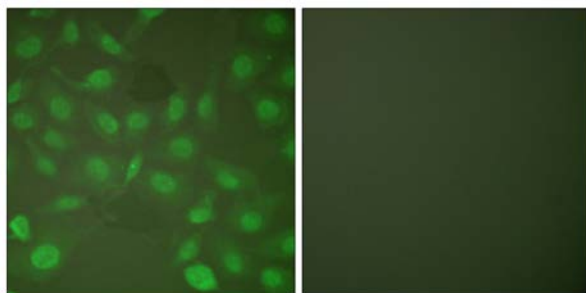
P-Peptide - +

Immunohistochemical analysis of paraffin-embedded human breast carcinoma tissue using C/EBP- β (phospho-Thr235/188) antibody.



Western blot analysis of extracts from HepG2 cells, treated with EGF (200ng/ml, 30mins), using C/EBP- β (phospho-Thr235/188) antibody.

For Research Use Only



P-peptide

-

+

Immunofluorescence analysis of HepG2 cells, using
C/EBP- β (phospho-Thr235/188) antibody (#11357).