



C/EBP- β (Ab-235/188) Antibody

E11-0057B

Catalog Number: E11-0057B

Amount: 100 μ g/100 μ l

Swiss-Prot No. : P17676

All Names: AGP/EBP, C/EBP beta, C/EBP-related protein 2, CCAAT/enhancer binding protein beta, CEBPB, CRP2, IL-6DBP, Interleukin-6- dependent binding protein, LAP, Liver-enriched transcriptional activator, Nuclear factor NF-IL6, SF-B, SFB, Silencer factor B, TCF5, Transcription factor 5

Form of Antibody: Rabbit IgG in phosphate buffered saline (without Mg²⁺ and Ca²⁺), pH 7.4, 150mM NaCl, 0.02% sodium azide and 50% glycerol.

Storage/Stability: Store at -20°C/1 year

Immunogen: The antiserum was produced against synthesized non-phosphopeptide derived from human C/EBP- β around the phosphorylation site of threonine 235 (P-G-T-P-S).

Purification: The antibody was affinity-purified from rabbit antiserum by affinity-chromatography using epitope-specific immunogen.

Specificity/Sensitivity C/EBP- β (Ab-235/188) antibody detects endogenous levels of total C/EBP- β protein.

Reactivity: Human, Mouse, Rat

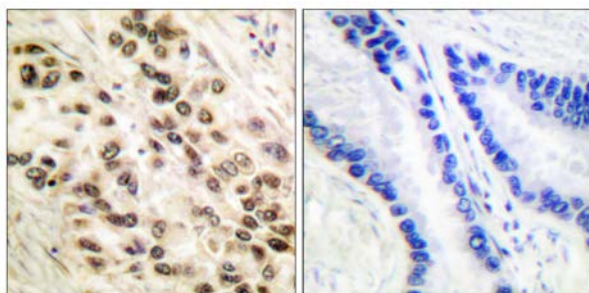
Applications: WB: 1:500~1:1000 IHC: 1:50~1:100
ELISA: 1:10000

References: Songyun Zhu, PNAS, Jan 2002; 99: 207.

Neoncheol Jung, Eur. J. Biochem., Oct 2000; 267: 6180.

Béatrice Thomas, Eur. J. Biochem., Dec 2000; 267: 6798.

Edoardo Parrella, J. Biol. Chem., Oct 2004; 279: 42026 - 42040.

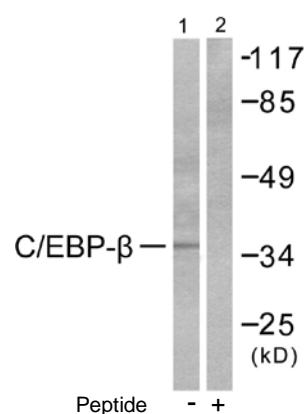


Peptide

-

+

Immunohistochemical analysis of paraffin-embedded human lung carcinoma tissue using C/EBP- β (Ab-235/188) antibody (#B0057).



Western blot analysis of extracts from NIH/3T3 cells, using C/EBP- β (Ab-235/188) antibody (#B0057).

For Research Use Only