



## Caspase 6 (Phospho-Ser257) Antibody

E11-0058A

**Catalog Number:** E11-0058A

**Concentration:** 1mg/ml

**Swiss-Prot No.:** P55212

**Other Names:** EC 3.4.22.-, ICE6, MCH2, apoptotic protease Mch-2, caspase-6

**All Sites:** Human: Ser257; Mouse: Ser239; Rat: Ser240

**Storage/Stability:** Store at -20 °C/1 ye

**Form of Antibody:** Rabbit IgG in phosphate buffered saline (without  $Mg^{2+}$  and  $Ca^{2+}$ ), pH 7.4, 150mM NaCl, 0.02% sodium azide and 50% glycerol.

**Immunogen:** The antiserum was produced against synthesized phosphopeptide derived from human Caspase 6 around the phosphorylation site of serine 257 (K-V-S<sup>P</sup>-Q-R).

**Purification:** The antibody was affinity-purified from rabbit antiserum by affinity-chromatography using epitope-specific phosphopeptide. The antibody against non-phosphopeptide was removed by chromatography using non-phosphopeptide corresponding to the phosphorylation site.

**Specificity:** Caspase 6 (Phospho-Ser257) antibody detects endogenous levels of Caspase 6 only when phosphorylated at serine 257.

**Reactivity:** Human, Mouse, Rat

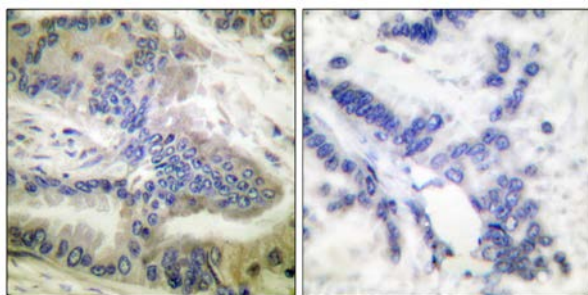
**Applications:** WB: 1:500~1:1000    IHC: 1:50~1:100    IF: 1:100~1:500    ELISA: 1:1000

### References:

Lijun Zhu, Mol. Cancer Ther., May 2005; 4: 787 - 798.

Michael H. Cardone, Science, Nov 1998; 282: 1318.

Carlos Caulín, J. Cell Biol., Sep 1997; 138: 1379.

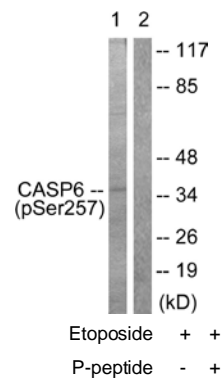


P-peptide

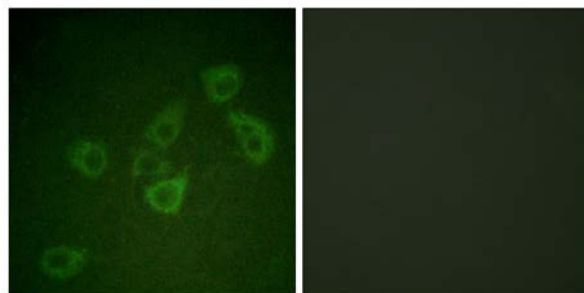
-

+

Immunohistochemistry analysis of paraffin-embedded human colon carcinoma tissue using Caspase 6 (Phospho-Ser257) antibody.



Western blot analysis of extracts from 293 cells treated with Etoposide (25uM, 60min), using Caspase 6 (Phospho-Ser257) antibody.



P-peptide

-

+

Immunofluorescence analysis of HuvEc cells, using Caspase 6 (Phospho-Ser257) antibody.