



## Caspase 8 (Phospho-Ser347) Antibody

E11-0059A

**Catalog Number:** E11-0059A

**Concentration:** 1mg/ml

**Swiss-Prot No.:** Q14790

**Other Names:** Apoptotic cysteine protease, Apoptotic protease Mch-5, CAP4, Caspase-8 precursor, EC 3.4.22.-, FADD-homologous ICE/CED-3- like protease, FADD-like ICE, FLICE, ICE-like apoptotic protease 5, ICE8, MACH, MCH5, MORT1-associated CED-3 homolog

**All Sites:** Human: Ser347; Mouse: Ser349

**Storage/Stability:** Store at -20 °C/1 year

**Form of Antibody:** Rabbit IgG in phosphate buffered saline (without  $Mg^{2+}$  and  $Ca^{2+}$ ), pH 7.4, 150mM NaCl, 0.02% sodium azide and 50% glycerol.

**Immunogen:** The antiserum was produced against synthesized phosphopeptide derived from human Caspase 8 around the phosphorylation site of serine 347 (C-P-S<sup>P</sup>-L-A).

**Purification:** The antibody was affinity-purified from rabbit antiserum by affinity-chromatography using epitope-specific phosphopeptide. The antibody against non-phosphopeptide was removed by chromatography using non-phosphopeptide corresponding to the phosphorylation site.

**Specificity:** Caspase 8 (Phospho-Ser347) antibody detects endogenous levels of Caspase 8 only when phosphorylated at serine 347.

**Reactivity:** Human, Mouse

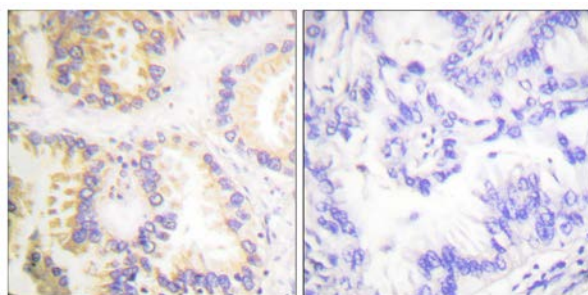
**Applications:** WB: 1:500~1:1000 IHC: 1:50~1:100 ELISA: 1:1000

**References:**

Daniel R. Beisner, J. Immunol., Sep 2005; 175: 3469 - 3473.

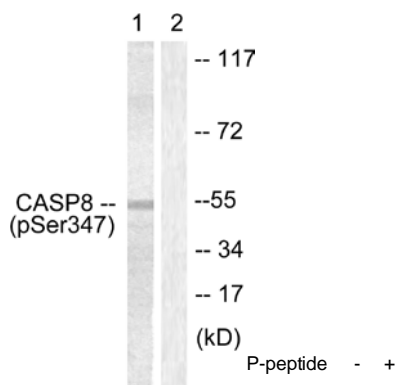
Peter J. Wild, Mol. Cancer Ther., Apr 2005; 4: 516 - 528.

A.V. TIMOFEEVA, Ann. N.Y. Acad. Sci., Dec 2006; 1091: 319 - 335.



P-peptide - +

Immunohistochemistry analysis of paraffin-embedded human lung carcinoma tissue using Caspase 8 (Phospho-Ser347) antibody.



Western blot analysis of extracts from Jurkat cells, using Caspase 8 (Phospho-Ser347) antibody.