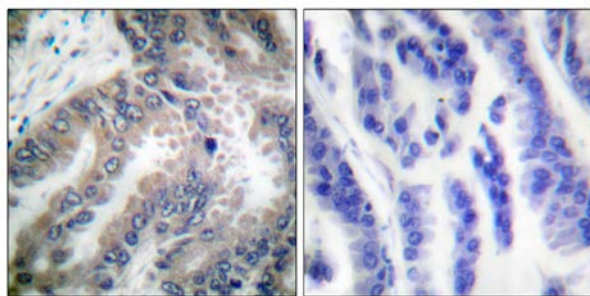




## Caspase 8 (Ab-347) Antibody

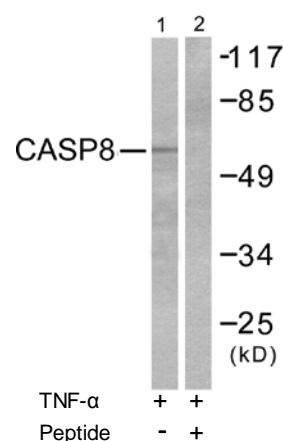
E11-0059B

- Catalog Number:** E11-0059B
- Amount:** 100µg/100µl
- Swiss-Prot No.:** Q14790
- All Names:** Apoptotic cysteine protease, Apoptotic protease Mch-5, CAP4, Caspase-8 precursor, EC 3.4.22.-, FADD-homologous ICE/CED-3- like protease, FADD-like ICE, FLICE, ICE-like apoptotic protease 5, ICE8, MACH, MCH5, MORT1-associated CED-3 homolog
- Form of Antibody:** Rabbit IgG in phosphate buffered saline (without  $Mg^{2+}$  and  $Ca^{2+}$ ), pH 7.4, 150mM NaCl, 0.02% sodium azide and 50% glycerol.
- Storage/Stability:** Store at -20°C/1 year
- Immunogen:** The antiserum was produced against synthesized non-phosphopeptide derived from human Caspase 8 around the phosphorylation site of serine 347 (C-P-S-L-A).
- Purification:** The antibody was affinity-purified from rabbit antiserum by affinity-chromatography using epitope-specific immunogen.
- Specificity/Sensitivity:** Caspase 8 (Ab-347) antibody detects endogenous levels of total Caspase 8 protein.
- Reactivity:** Human, Mouse, Rat
- Applications:** WB: 1:500~1:1000 IHC: 1:50~1:100  
ELISA: 1:1000
- References:** Daniel R. Beisner, J. Immunol., Sep 2005; 175: 3469 - 3473.  
Peter J. Wild, Mol. Cancer Ther., Apr 2005; 4: 516 - 528.  
A.V. TIMOFEEVA, Ann. N.Y. Acad. Sci., Dec 2006; 1091: 319 - 335.  
Leon Tourian, J. Cell Sci., Dec 2004; 117: 6459 - 6471.



Peptide - +

Immunohistochemical analysis of paraffin-embedded human lung carcinoma tissue using Caspase 8 (Ab-347) antibody (#B0059).



Western blot analysis of extracts from NIH/3T3 cells treated with TNF-α (20ng/ml, 30min), using Caspase 8 (Ab-347) antibody (#B0059, Line 1 and 2).

**For Research Use Only**