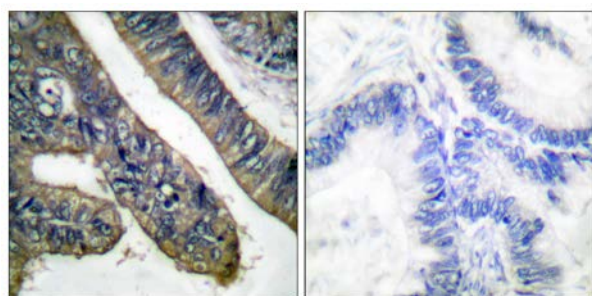




## c-PLA2 (Phospho-Ser505) Antibody

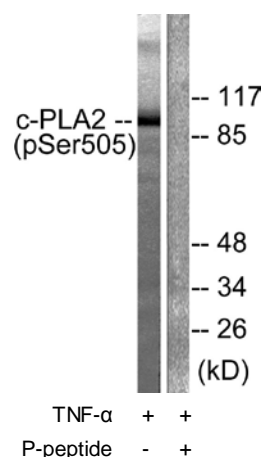
E11-0065A

- Catalog Number:** E11-0065A
- Amount:** 100µg/100µl
- Swiss-Prot No. :** P47712
- All Names:** CPLA2, Cytosolic phospholipase A2, EC 3.1.1.4, EC 3.1.1.5, PA24, PA24A, PLA2G4, PLA2G4A, Phosphatidylcholine 2-acylhydrolase
- All Sites:** Human: Ser505; Mouse: Ser505; Rat: Ser505
- Form of Antibody:** Rabbit IgG in phosphate buffered saline (without  $Mg^{2+}$  and  $Ca^{2+}$ ), pH 7.4, 150mM NaCl, 0.02% sodium azide and 50% glycerol.
- Storage/Stability:** Store at -20°C/1 year
- Immunogen:** The antiserum was produced against synthesized phosphopeptide derived from human c-PLA2 around the phosphorylation site of serine 505 (P-L-S<sup>P</sup>-P-L).
- Purification:** The antibody was affinity-purified from rabbit antiserum by affinity-chromatography using epitope-specific phosphopeptide. The antibody against non-phosphopeptide was removed by chromatography using non-phosphopeptide corresponding to the phosphorylation site.
- Specificity/Sensitivity:** c-PLA2 (Phospho-Ser505) antibody detects endogenous levels of c-PLA2 only when phosphorylated at serine 505.
- Reactivity:** Human, Mouse, Rat
- Applications:** WB: 1:500~1000      IHC: 1:50~100  
IF: 1:100~1:500      ELISA: 1:10000
- References:** D. D. Denson, J Neurophysiol, Jun 2005; 93: 3146 - 3156.  
Diane M. Duffy, J. Clin. Endocrinol. Metab., Oct 2005; 90: 5858 - 5865.  
Andrei I. Ivanov, Am J Physiol Regulatory Integrative Comp Physiol, Nov 2002; 283: 1104.  
Miriam Kolko, Invest. Ophthalmol. Vis. Sci., Mar 2007; 48: 1401 - 1409.



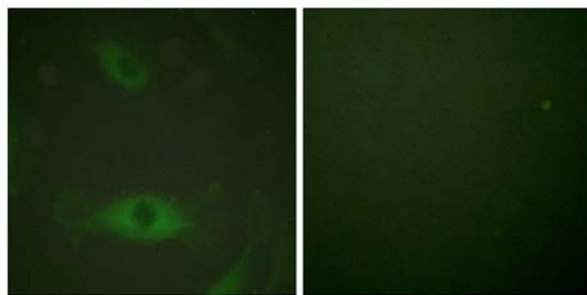
P-peptide                      -                      +

Immunohistochemical analysis of paraffin-embedded human colon carcinoma tissue using c-PLA2 (Phospho-Ser505) antibody (#A0065).



Western blot analysis of extracts from HeLa cells treated with TNF-α (20ng/ml, 30mins), using c-PLA2 (Phospho-Ser505) antibody (#A0065).

**For Research Use Only**

TNF- $\alpha$ 

+

-

Immunofluorescence analysis of HeLa cells treated with TNF- $\alpha$  (20nM, 15mins), using c-PLA2 (Phospho-Ser505) antibody (#A0065).