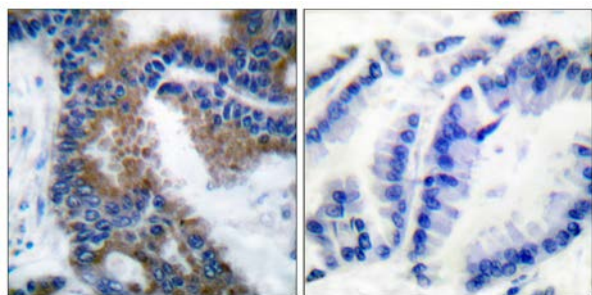




## CrkL (Phospho-Tyr207) Antibody

E11-0067A

- Catalog Number:** E11-0067A  
**Amount:** 100µg/100µl  
**Swiss-Prot No. :** P16949  
**All Names:** stathmin 1, LAG, LAP18, Leukemia-associated gene protein, Leukemia-associated phosphoprotein p18, Metablastin, Oncoprotein 18, Op18, PR22, Phosphoprotein p19, Pr22 protein, Prosolin, STN1, pp17, pp19, stathmin  
**All Sites:** Human: Tyr207; Mouse: Tyr207  
**Form of Antibody:** Rabbit IgG in phosphate buffered saline (without  $Mg^{2+}$  and  $Ca^{2+}$ ), pH 7.4, 150mM NaCl, 0.02% sodium azide and 50% glycerol.  
**Storage/Stability:** Store at -20°C/1 year  
**Immunogen:** The antiserum was produced against synthesized phosphopeptide derived from human CrkL around the phosphorylation site of tyrosine 207(H-A-Y<sup>P</sup>-A-Q).  
**Purification:** The antibody was affinity-purified from rabbit antiserum by affinity-chromatography using epitope-specific phosphopeptide. The antibody against non-phosphopeptide was removed by chromatography using non-phosphopeptide corresponding to the phosphorylation site.  
**Specificity/Sensitivity:** CrkL (phospho-Tyr207) antibody detects endogenous levels of CrkL only when phosphorylated at tyrosine 207.  
**Reactivity:** Human, Mouse  
**Applications:** WB: 1:500~1:1000      IHC: 1:50~1:100  
IF: 1:100~1:500      ELISA: 1:5000  
**References:** Martin Sattler, J. Biol. Chem., Apr 1997; 272: 10248.  
J ten Hoeve, Blood, Sep 1994; 84: 1731 - 1736.  
Andrew A. Butler, J. Biol. Chem., Oct 1997; 272: 27660.  
Franck Gesbert, J. Biol. Chem., Feb 1998; 273: 3986.

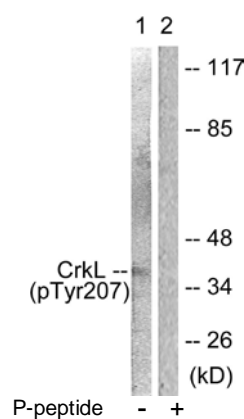


P-peptide

-

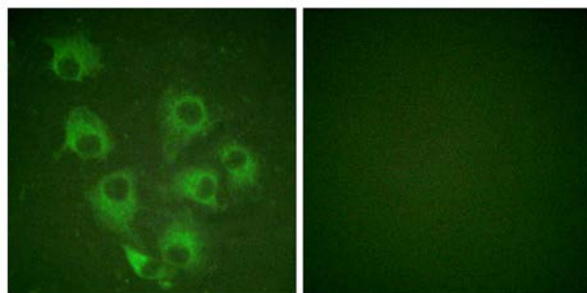
+

Immunohistochemical analysis of paraffin-embedded human colon carcinoma tissue using CrkL (phospho-Tyr207) antibody.



Western blot analysis of extracts from COS7 cells, using CrkL (phospho-Tyr207) antibody.

**For Research Use Only**



P-peptide

-

+

Immunofluorescence analysis of HuvEc cells, using CrkL (phospho-Tyr207) antibody.