



CrkL (Ab-207) Antibody

E11-0067B

Catalog Number: E11-0067B

Amount: 100µg/100µl

Swiss-Prot No. : P46109

All Names: CRKOL, Crk-like protein

Form of Antibody: Rabbit IgG in phosphate buffered saline (without Mg^{2+} and Ca^{2+}), pH 7.4, 150mM NaCl, 0.02% sodium azide and 50% glycerol.

Storage/Stability: Store at -20 °C/1 year

Immunogen: The antiserum was produced against synthesized non-phosphopeptide derived from human CrkL around the phosphorylation site tyrosine 207 (H-A-Y-A-Q).

Purification: The antibody was affinity-purified from rabbit antiserum by affinity-chromatography using epitope-specific immunogen.

Specificity/Sensitivity CrkL (Ab-207) antibody detects endogenous levels of total CrkL protein.

Reactivity: Human, Mouse

Applications: WB: 1:500~1:1000 IHC: 1:50~1:100

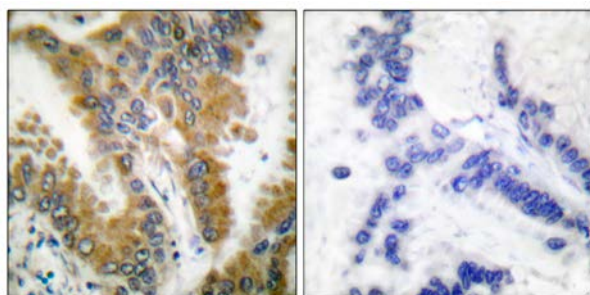
IF: 1:100~1:500 ELISA: 1:10000

References: Martin Sattler, J. Biol. Chem., Apr 1997; 272: 10248.

J ten Hoeve, Blood, Sep 1994; 84: 1731 - 1736.

Andrew A. Butler, J. Biol. Chem., Oct 1997; 272: 27660.

Franck Gesbert, J. Biol. Chem., Feb 1998; 273: 3986.

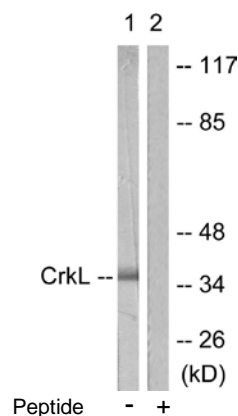


Peptide

-

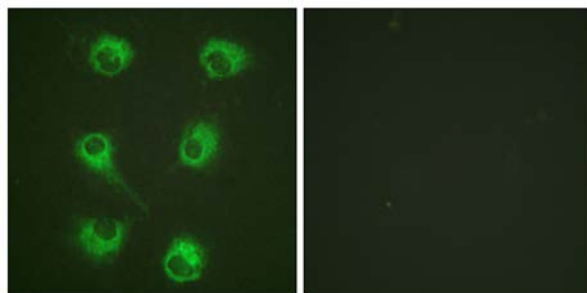
+

Immunohistochemical analysis of paraffin-embedded human lung carcinoma tissue, using CrkL (Ab-207) antibody (#B0067).



Western blot analysis of extracts from 293 cells, using CrkL (Ab-207) antibody (#B0067, Line 1 and 2).

For Research Use Only



Peptide

-

+

Immunofluorescence analysis of HuvEc cells, using CrkL (Ab-207) antibody (#B0067).