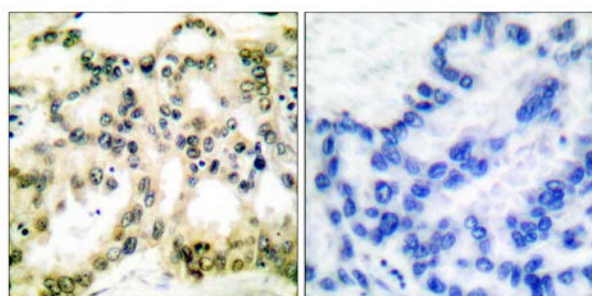




Cyclin B1 (Phospho-Ser126) Antibody

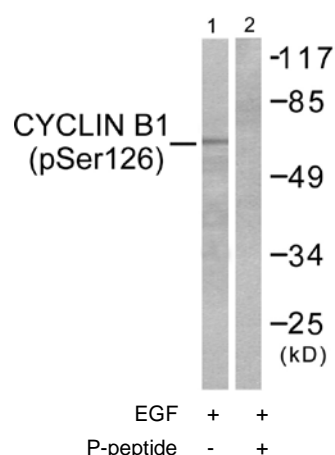
E11-0068A

- Catalog Number:** E11-0068A
- Amount:** 100µg/100µl
- Swiss-Prot No. :** P14635
- All Names:** CCN-2, CCNB, CCNB1, CCNB1-RS1, CYCB, CYCB1, G2/mitotic-specific cyclin B1
- All Sites:** Human: Ser126; Mouse: Ser123
- Form of Antibody:** Rabbit IgG in phosphate buffered saline (without Mg^{2+} and Ca^{2+}), pH 7.4, 150mM NaCl, 0.02% sodium azide and 50% glycerol.
- Storage/Stability:** Store at -20°C/1 year
- Immunogen:** The antiserum was produced against synthesized phosphopeptide derived from human Cyclin B1 around the phosphorylation site of serine 126 (T-A-S^P-P-S).
- Purification:** The antibody was affinity-purified from rabbit antiserum by affinity-chromatography using epitope-specific phosphopeptide. The antibody against non-phosphopeptide was removed by chromatography using non-phosphopeptide corresponding to the phosphorylation site.
- Specificity/Sensitivity:** Cyclin B1 (Phospho-Ser126) antibody detects endogenous levels of Cyclin B1 only when phosphorylated at serine 126.
- Reactivity:** Human, Mouse
- Applications:** WB: 1:500~1000 IHC: 1:50~100
ELISA: 1:5000
- References:** Jing Yang, J. Biol. Chem., Jan 2001; 276: 3604 - 3609.
Susan Walsh, Mol. Cancer Res., Feb 2003; 1: 280.
Florian Bassermann, J. Biol. Chem., Mar 2007; 10.1074.
Jianke Li, PNAS, Jan 1997; 94: 502.



P-peptide - +

Immunohistochemical analysis of paraffin-embedded human lung carcinoma tissue using Cyclin B1 (Phospho-Ser126) antibody (#A0068).



Western blot analysis of extracts from NIH/3T3 cells, treated with EGF (200ng/ml, 15mins), using Cyclin B1 (Phospho-Ser126) antibody (#A0068).

For Research Use Only