



## Cyclin B1 (Ab-126) Antibody

E11-0068B

**Catalog Number:** E11-0068B

**Amount:** 100µg/100µl

**Swiss-Prot No. :** P14635

**All Names:** CCN-2, CCNB, CCNB1, CCNB1-RS1, CYCB, CYCB1, G2/mitotic-specific cyclin B1

**Form of Antibody:** Rabbit IgG in phosphate buffered saline (without  $Mg^{2+}$  and  $Ca^{2+}$ ), pH 7.4, 150mM NaCl, 0.02% sodium azide and 50% glycerol.

**Storage/Stability:** Store at -20°C/1 year

**Immunogen:** The antiserum was produced against synthesized non-phosphopeptide derived from human Cyclin B1 around the phosphorylation site of serine 126 (T-A-S-P-S).

**Purification:** The antibody was affinity-purified from rabbit antiserum by affinity-chromatography using epitope-specific immunogen.

**Specificity/Sensitivity** Cyclin B1 (Ab-126) antibody detects endogenous levels of total Cyclin B1 protein.

**Reactivity:** Human, Mouse

**Applications:** WB: 1:500~1:1000 IHC: 1:50~1:100

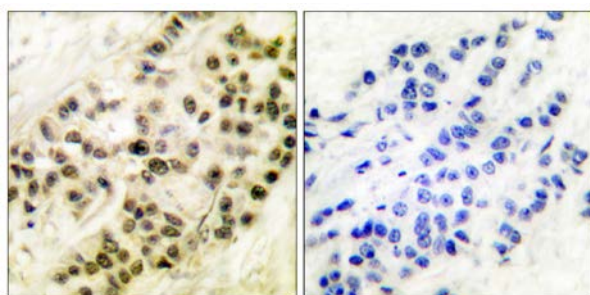
IF: 1:100~1:500 ELISA: 1:20000

**References:** Jing Yang, J. Biol. Chem., Jan 2001; 276: 3604 - 3609.

Susan Walsh, Mol. Cancer Res., Feb 2003; 1: 280.

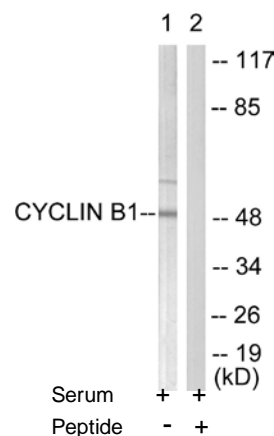
Florian Bassermann, J. Biol. Chem., Mar 2007; 10.1074.

Jianke Li, PNAS, Jan 1997; 94: 502.



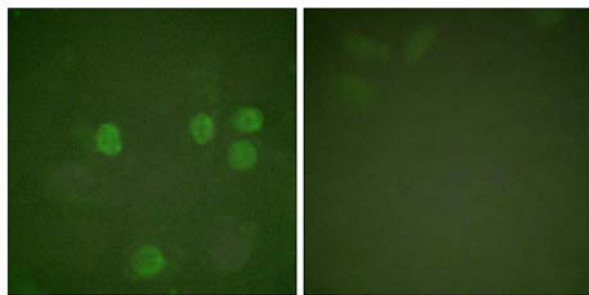
Peptide - +

Immunohistochemical analysis of paraffin-embedded human breast carcinoma tissue using Cyclin B1 (Ab-126) antibody (#BOO68).



Western blot analysis of extracts from HeLa cells, treated with serum (10%, 15min), using Cyclin B1 (Ab-126) antibody (#BOO68, Line 1 and 2).

**For Research Use Only**



Forskolin

+

-

Immunofluorescence analysis of HeLa cells, treated with Forskolin (40nM, 30mins), using Cyclin B1 (Ab-126) antibody (#BOO68).