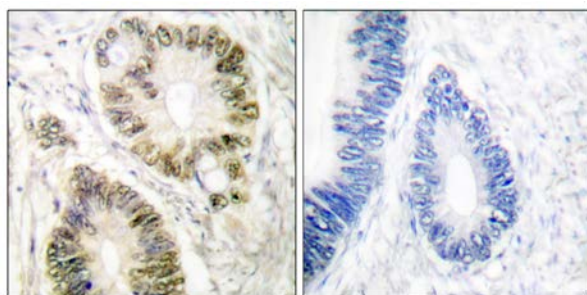




Cyclin E1 (Phospho-Thr395) Antibody

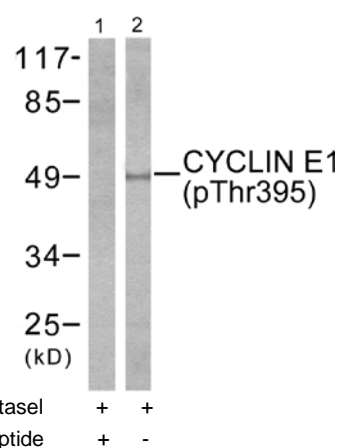
E11-0069A

- Catalog Number:** E11-0069A
- Amount:** 100µg/100µl
- Swiss-Prot No. :** P24864
- All Names:** CCNE, CCNE1, G1/S-specific cyclin E1
- All Sites:** Human: Thr395
- Form of Antibody:** Rabbit IgG in phosphate buffered saline (without Mg^{2+} and Ca^{2+}), pH 7.4, 150mM NaCl, 0.02% sodium azide and 50% glycerol.
- Storage/Stability:** Store at -20°C/1 year
- Immunogen:** The antiserum was produced against synthesized phosphopeptide derived from human Cyclin E1 around the phosphorylation site of threonine 395 (L-L-T^P-P-P).
- Purification:** The antibody was affinity-purified from rabbit antiserum by affinity-chromatography using epitope-specific phosphopeptide. The antibody against non-phosphopeptide was removed by chromatography using non-phosphopeptide corresponding to the phosphorylation site.
- Specificity/Sensitivity:** Cyclin E1 (phospho-Thr395) antibody detects endogenous levels of Cyclin E1 only when phosphorylated at threonine 395.
- Reactivity:** Human
- Applications:** WB: 1:500~1:1000 IHC: 1:50~1:100
ELISA: 1:10000
- References:** Wentao Deng, J. Virol., Dec 2004; 78: 13954 - 13965.
Tianlin Ma, PNAS, Jan 1999; 96: 382.
Nathalie Cueille, J. Virol., Sep 1998; 72: 7255 - 7262.
Chiung-Yueh Hsu, J. Virol., Jan 2007; 81: 384 - 394.



P-peptide - +

Immunohistochemical analysis of paraffin-embedded human colon carcinoma tissue using Cyclin E1 (phospho-Thr395) antibody.



Western blot analysis of extracts from HeLa cells, treated with Paclitaxel (1µM, 60mins), using Cyclin E1 (phospho-Thr395) antibody.

For Research Use Only