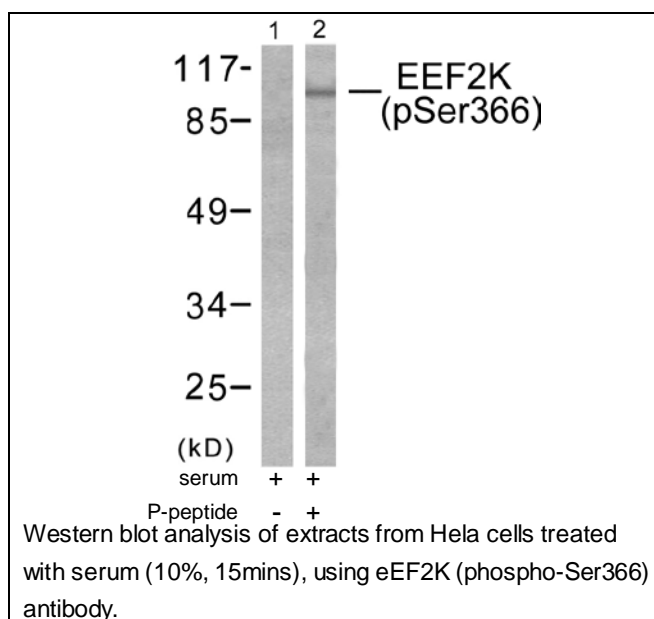




## eEF2K (Phospho-Ser366) Antibody

E11-0071A

- Catalog Number:** E11-0071A
- Amount:** 100µg/100µl
- Swiss-Prot No. :** O00418
- All Names:** stathmin 1, LAG, LAP18, Leukemia-associated gene protein, Leukemia-associated phosphoprotein p18, Metablastin, Oncoprotein 18, Op18, PR22, Phosphoprotein p19, Pr22 protein, Prosolin, STN1, pp17, pp19, stathmin
- All Sites:** Human: Ser366; Mouse: Ser365; Rat: Ser365
- Form of Antibody:** Rabbit IgG in phosphate buffered saline (without  $Mg^{2+}$  and  $Ca^{2+}$ ), pH 7.4, 150mM NaCl, 0.02% sodium azide and 50% glycerol.
- Storage/Stability:** Store at -20°C/1 year
- Immunogen:** The antiserum was produced against synthesized phosphopeptide derived from human eEF2K around the phosphorylation site of serine 366 (T-L-S<sup>P</sup>-G-S).
- Purification:** The antibody was affinity-purified from rabbit antiserum by affinity-chromatography using epitope-specific phosphopeptide. The antibody against non-phosphopeptide was removed by chromatography using non-phosphopeptide corresponding to the phosphorylation site.
- Specificity/Sensitivity:** eEF2K (phospho-Ser366) antibody detects endogenous levels of eEF2K only when phosphorylated at serine 366.
- Reactivity:** Human, Mouse, Rat
- Applications:** WB: 1:500~1:1000      ELISA: 1:40000
- References:** Sandrine Horman, J. Biol. Chem., Oct 2003; 278: 41970 - 41976.  
Ly Q. Hong-Brown, J. Biol. Chem., Feb 2007; 282: 3702 - 3712.  
Hening Ren, Cancer Res., Jul 2005; 65: 5841 - 5847.  
Huanchun Zhang, J. Biol. Chem., Apr 2007; 10.1074.



**For Research Use Only**