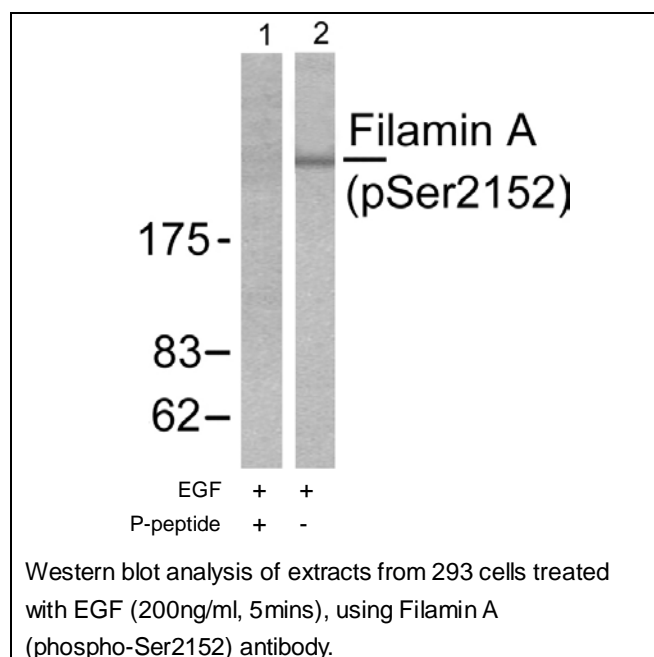




## Filamin A (Phospho-Ser2152) Antibody

E11-0072A

- Catalog Number:** E11-0072A  
**Amount:** 100µg/100µl  
**Swiss-Prot No. :** P21333  
**All Names:** ABP-280, Alpha-filamin, Endothelial actin-binding protein, FLN, FLN1, Filamin 1, Nonmuscle filamin, filamin A  
**All Sites:** Human: Ser2152; Mouse: Ser2152; Rat: Ser2239  
**Form of Antibody:** Rabbit IgG in phosphate buffered saline (without  $Mg^{2+}$  and  $Ca^{2+}$ ), pH 7.4, 150mM NaCl, 0.02% sodium azide and 50% glycerol.  
**Storage/Stability:** Store at -20°C/1 year  
**Immunogen:** The antiserum was produced against synthesized phosphopeptide derived from human Filamin A around the phosphorylation site of serine 2152 (A-P-S<sup>P</sup>-V-A).  
**Purification:** The antibody was affinity-purified from rabbit antiserum by affinity-chromatography using epitope-specific phosphopeptide. The antibody against non-phosphopeptide was removed by chromatography using non-phosphopeptide corresponding to the phosphorylation site.  
**Specificity/Sensitivity:** Filamin A (phospho-Ser2152) antibody detects endogenous levels of Filamin A only when phosphorylated at serine 2152.  
**Reactivity:** Human, Mouse, Rat  
**Applications:** WB: 1:500~1:1000      ELISA: 1:10000  
**References:** Atul Deshmukh, Diabetes, Jun 2006; 55: 1776 - 1782.  
Michele S. Woo, Mol. Cell. Biol., Apr 2004; 24: 3025 - 3035.  
D. Wallach, J. Biol. Chem., Jul 1978; 253: 4739 - 4745.  
Kyeong-Man Kim, J. Biol. Chem., Apr 2005; 280: 12774 - 12780.



**For Research Use Only**